

## VDI SYSTEM CATALOG

VDI CABLING SOLUTIONS FOR TERTIARY AND RESIDENTIAL SECTORS





**ABOUT ID CABLES..... 4-5**

**CATEGORY 6A SYSTEM ..... 7-15**

Cable S/FTP Cat.7 LSZH ..... 7  
 Cable F/FTP Cat.6A LSZH ..... 8  
 Cable F/UTP Cat.6A LSZH ..... 9  
 Cable F/FTP Grade 3 TV LSZH Cca/Att.-85dB ..... 10  
 Jack RJ45 Cat.6A shielded 360° ..... 11  
 Socket RJ45 Cat.6A shielded 360° ..... 12  
 Connector RJ45 toolless Cat.6A shielded 360° ..... 13  
 Coupler Cat.6A Fem/Fem RJ45 ..... 14  
 Patch cord Cat.6A S/FTP LSZH ..... 15

**CATEGORY 6 SYSTEM ..... 16-20**

Cable F/UTP Cat.6 LSZH ..... 16  
 Jack RJ45 Cat.6 shielded 360° ..... 17  
 Socket RJ45 Cat.6 shielded 360° ..... 18  
 Plug RJ45 Cat.6 shielded for rigid fibers ..... 19  
 Patch cord Cat.6 FTP ..... 20

**ACCESSORIES FOR RJ45 CONNECTIONS ..... 22-26**

Patch panel 1U 24 Ports with ground stud ..... 22  
 Faceplate 1 or 2 ports RJ - 45mm x 45mm ..... 23  
 Surface-mount box 80mm x 80mm - 1 port RJ ..... 24  
 Splitter Cat.6 RJ45 2 ports ..... 25  
 DIN support for RJ45 - 1 port ..... 26

**FIBER-OPTIC CABLES ..... 28- 31**

FO cable tight structure indoor/outdoor ..... 28  
 FO cable loose structure indoor/outdoor ..... 26  
 FO cable loose structure armored outdoor ..... 30  
 FO cable loose structure outdoor ..... 31

**PACK CABINET 10-INCH CAT.6A ..... 33**

**CABINETS 19-INCH ..... 34**

Cabinet 19-inch depth of 450mm ..... 34  
 Cabinet 19-inch depth of 600mm ..... 35

**FLOOR-STANDING CABINETS 19-INCH ..... 36- 37**

Floor-standing cabinet 19-inch ..... 36  
 Server cabinet 19-inch ..... 37

**ACCESSORIES FOR CABINETS 19-INCH ..... 38-45**

Wheel kit for 19-inch cabinet ..... 38  
 Fan unit for 19-inch cabinet ..... 39  
 Screws, washers and cage nuts fasteners for 19-inch accessories ..... 40  
 Power strip 19-inch 8 sockets ..... 41  
 Fixed shelf for 19-inch cabinets ..... 42  
 Cable pass-through with brush strip 1U 19-inch ..... 43  
 Cable guide 4 clips 19-inch ..... 44  
 Blanking plate 1U 19-inch ..... 45

**PATCH CORDS AUDIO/VIDEO ..... 46-47**

Patch cord HDMI 2.0 molded Male-Male ..... 46  
 Patch cord VGA male ..... 47

**TOOLS AND TEST EQUIPMENT ..... 48-51**

Cable tester ..... 48  
 "Premium" tool and test kit ..... 49  
 "Professional" tool and test kit ..... 50  
 Stripping tool ..... 51

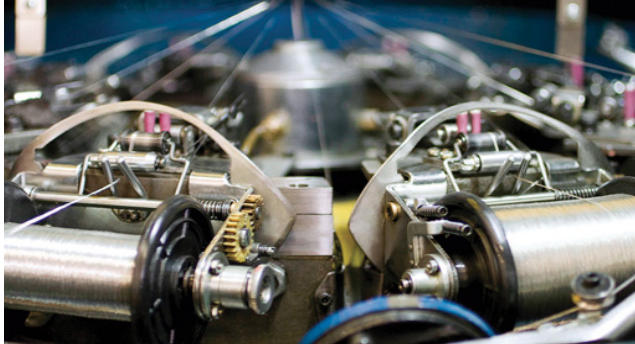
**SWITCHING EQUIPMENT ..... 53-60**

Switches 10/100 ..... 53-54  
 Switches 10/100/1000 ..... 55-59  
 Switch 10/100/1000 POE ..... 60

**TECHNICAL INFORMATION ..... 62-63**

Cable construction guide ..... 62  
 Table of categories and connector types (ISO 11801) ..... 62  
 Attenuation for each type of fiber (ISO 11801) ..... 63  
 Strength of materials ..... 63

## EXPERTS AT YOUR SERVICE



ID CABLES works with a “Manufacturing Hub” of plants, each specialized in different industrial and construction applications—some for more than 50 years.

ID CABLES has a centralized logistics platform in Villabé, France with more than 30,000 m<sup>2</sup> of floor space. The platform is fully automated and makes use of cutting-edge machinery.



Established in  
**2010**



Employees  
**12**



Product references  
**1800**

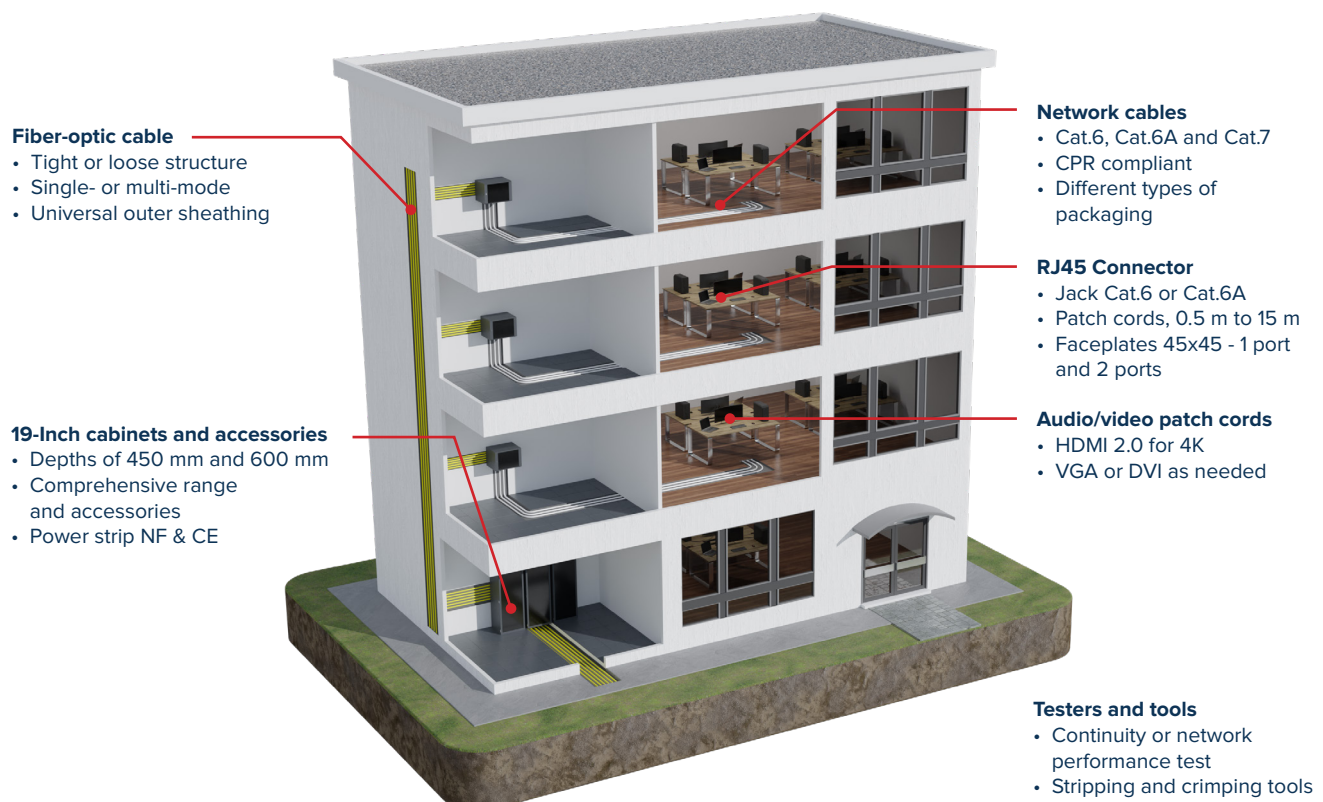


Storage area (m<sup>2</sup>)  
**30,000**

## GENESIA: A COMPREHENSIVE Voice Data Image SYSTEM

Building on the industrial experience of its sister companies in the connection technology field, ID CABLES proposes a comprehensive system for network and audio/video cabling with its new brand -- GENESIA.

Our concept: a small range of products that can meet every need for buildings in the tertiary and residential sectors.



## A HIGH-QUALITY OFFER

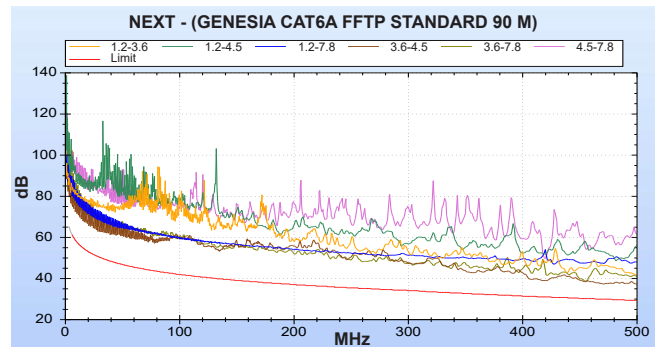
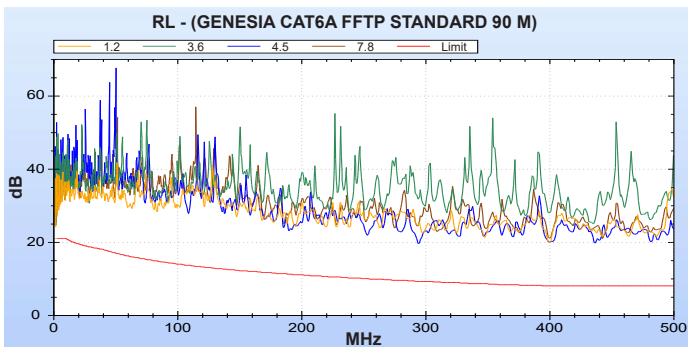
We manufacture thousands of miles of LAN cables every year, without ever losing sight of our number one priority: top-quality products.

We count on these same high standards and time-tested quality control processes to offer this range of high-performance cables and connectors.

Tests performed with 90 m of Cat.6A F/FTP cables (FF4P6ASH) and RJ45 Cat.6A connectors (IDKJ6AS)

NEXT margin: 7.3 dB

RL margin: 7.7 dB



Based on our automated production systems and our know-how in process optimization, our GENESIA range offers top-notch quality at reasonable prices.

VDI technology is governed by a strict normative framework that only accepts high-performance, long-lasting materials, as it is one of the few sectors in which 100% of the installations are tested on delivery.

But high-quality doesn't necessarily mean high prices: it is now possible to offer connectivity solutions at affordable prices.

## AN ADDED BONUS: CLEVER PACKAGING

We're always looking for ways to make our products more practical to better serve you. Our smart packaging solutions make it easier to use our products in the field.

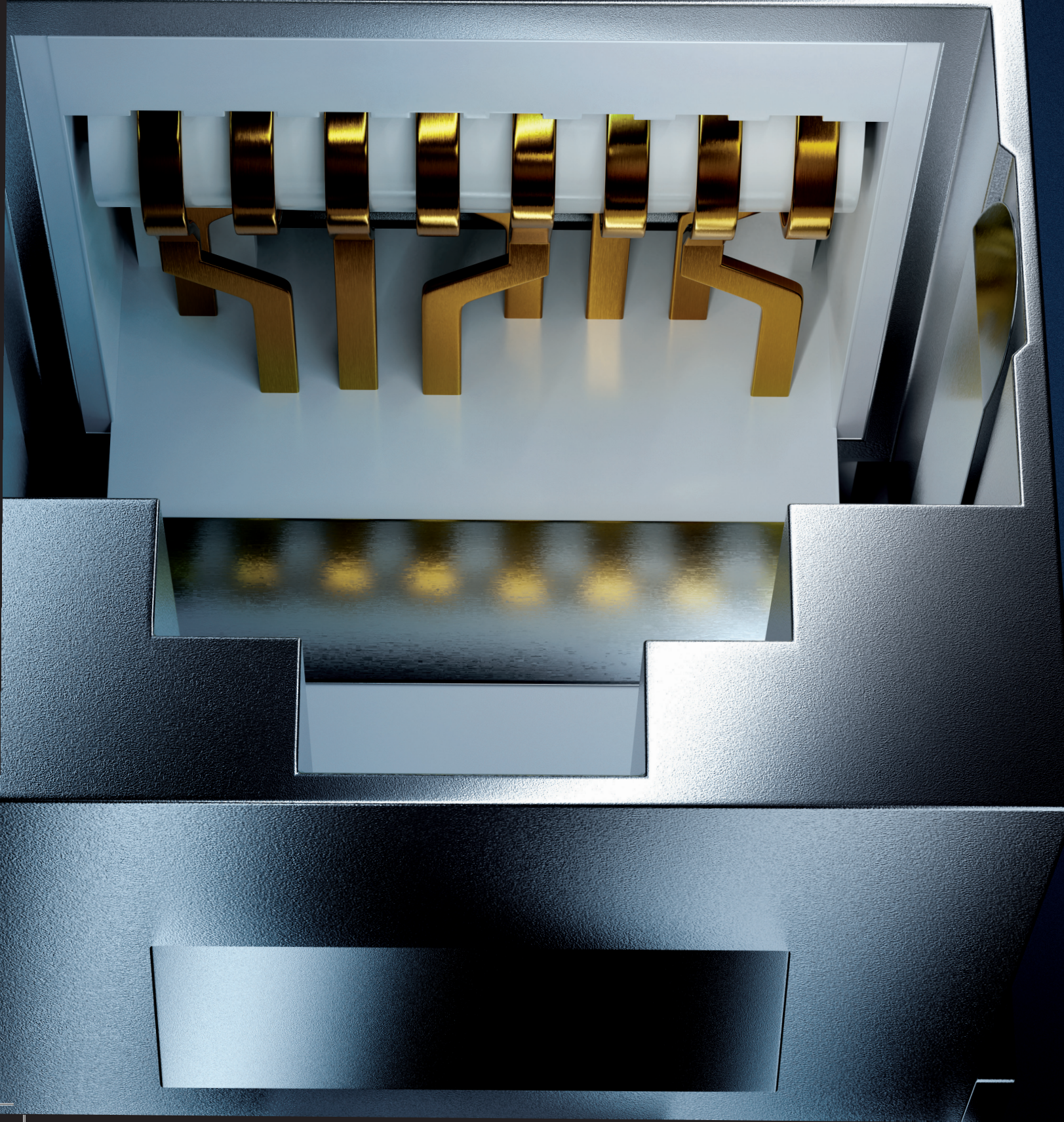


ref. IDKJ6AS100



ref. IDVEC200

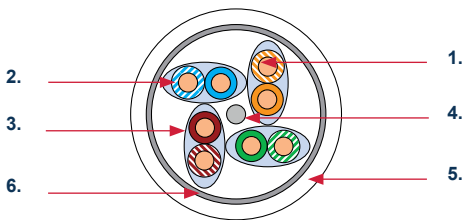
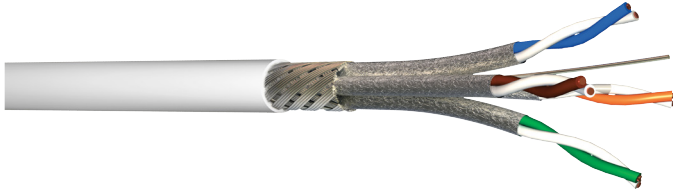
CAT 6A





# SFxpP7SH

## Cable Cat. 7 S/FTP LSZH



1. Core: Single-fiber annealed copper AWG23/1
2. Insulation: Polyethylene Skin Foam Skin
3. Individual shielding: Al/PeS foil
4. Drain wire: Single-fiber tinned copper
5. Overall shielding: Tinned copper braid
6. Outer jacket: LSZH – white RAL 9003



“A robust cable! Perfectly adapted to environments with interference. It’s the right choice for hospitals and industrial sites with high electromagnetic interference.”

### ADVANTAGES

- Cable suitable for all IP applications up to 10 Gbit/s
- Excellent electromagnetic immunity, both for high- and low-frequency interference
- Compliant with CPR Dca classification

### DESCRIPTION

Used in a horizontal or backbone configuration (bypass), it is the basis for a VDI (Voice-Data-Image) network.

Its shielding ensures excellent performance of up to 600 MHz in environments subject to interference.

Its internal structure provides high margins with respect to the current standards.

### APPLICATION

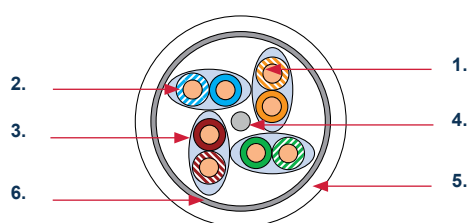
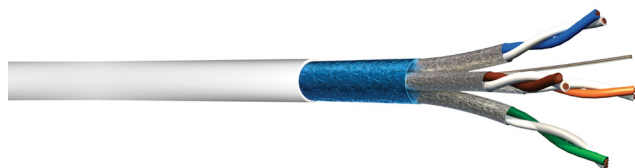
- Ethernet base T up to 10 Gbit/s
- VoIP & ISDN
- IEEE 802.3 af/at/bt: PoE, PoE+ and 4PPoE

### STANDARDS

- **CABLE:** IEC 61156-5 CAT7
- **SYSTEM:** ISO 11801 ED.3 CLASS EA OR F
- EIA/TIA 568-2.D CAT.6A

### ORDERING INFORMATION

| REF     | DESCRIPTION                          | DIAMETER      | PACKAGING |
|---------|--------------------------------------|---------------|-----------|
| SF4P7SH | Cables 100 Ohm S/FTP 4P CAT 7 LSZH   | 7.5 mm        | T.500m    |
| SF8P7SH | Cables 100 Ohm S/FTP 2X4P CAT 7 LSZH | 7.5 x 15.3 mm | T.500m    |



1. Core: Single-fiber annealed copper AWG23/1
2. Insulation: Polyethylene Skin Foam Skin
3. Individual shielding: Al/PeS foil
4. Drain wire: Single-fiber tinned copper
5. Overall shielding: Al/PeS foil
6. Outer jacket: LSZH – white RAL 9003



“The best cable solution for smart buildings: it makes it easy to deploy connected devices (IoT) thanks to its high performance and ability to dissipate heat generated by Power Over Ethernet (PoE).”

## ADVANTAGES

- Cable suitable for all IP applications up to 10 Gbit/s
- Excellent electromagnetic immunity provided by its double shielding
- Compliant with CPR Dca classification

## DESCRIPTION

Used in a horizontal or backbone configuration (bypass), it is the basis for a very high-speed VDI (Voice-Data-Image) network.

This cable can be used for transmission of digital and analog signals for voice, video links and data transmission up to 500 MHz.

## APPLICATION

- Ethernet base T up to 10 Gbit/s
- VoIP & ISDN
- IEEE 802.3 af/at/bt: PoE, PoE+ and 4PPoE

## STANDARDS

- **CABLE:** IEC 61156-5 CAT.6A
- **SYSTEM:** ISO 11801 ED.3 CLASS EA
- EIA/TIA 568-2.D CAT.6A

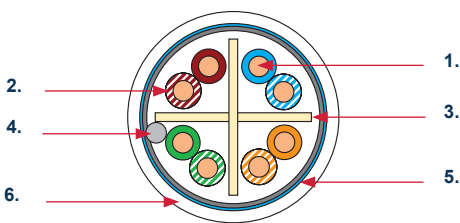
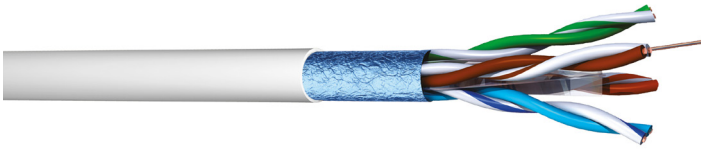
## ORDERING INFORMATION

| REF      | DESCRIPTION                           | DIAMETER      | PACKAGING                      |
|----------|---------------------------------------|---------------|--------------------------------|
| FF4P6ASH | Cable 100 Ohms F/FTP 4P Cat.6A LSZH   | 7,4 mm        | C.100m/Box 305m/T.500m/T.1000m |
| FF8P6ASH | Cable 100 Ohms F/FTP 2X4P Cat.6A LSZH | 7,4 x 15,3 mm | T.500m                         |



# FxP6ASH

## Cable F/UTP Cat.6A LSZH



1. Core: Single-fiber annealed copper AWG23/1
2. Insulation: Polyethylene
3. Central member: Thermoplastic cross
4. Drain wire: Single-fiber tinned copper
5. Shielding: Al/PeS foil
6. Outer jacket: LSZH – white RAL 9003



“A structure with overall shielding to ensure quick cable preparation and top-quality electromagnetic immunity. This is the Cat.6A version of the FTP best seller.”

### ADVANTAGES

- Cable suitable for all IP applications up to 10 Gbit/s
- Very good electromagnetic immunity provided by its overall shielding
- Compliant with CPR Dca classification

### DESCRIPTION

Used in a horizontal or backbone configuration (bypass), it is the basis for a very high-speed VDI (Voice-Data-Image) network.

This cable can be used for transmission of digital and analog signals for voice, video links and data transmission up to 500 MHz.

### APPLICATION

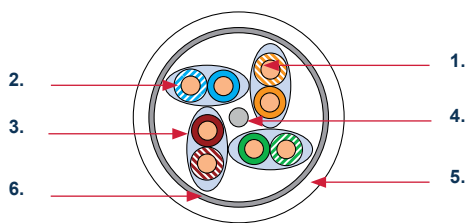
- Ethernet base T up to 10 Gbit/s
- VoIP & ISDN
- IEEE 802.3 af/at/bt: PoE, PoE+ and 4PPoE

### STANDARDS

- **CABLE:** IEC 61156-5 CAT6A
- **SYSTEM:** ISO 11801 ED.3 CLASS EA
- EIA/TIA 568-2.D CAT6A

### ORDERING INFORMATION

| REF     | DESCRIPTION                          | DIAMETER      | PACKAGING |
|---------|--------------------------------------|---------------|-----------|
| F4P6ASH | Cable 100 Ohms F/UTP 4P CAT6A LSZH   | 7.9 mm        | T.500m    |
| F8P6ASH | Cable 100 Ohms F/UTP 2X4P CAT6A LSZH | 7.4 x 16.0 mm | T.500m    |



1. Core: Single-fiber annealed copper AWG23/1
2. Insulation: Polyethylene Skin Foam Skin
3. Individual shielding: Al/PeS foil
4. Drain wire: Single-fiber tinned copper
5. Overall shielding: Al/PeS foil
6. Outer jacket: LSZH – white RAL 9003



“A high-performance cable for every need, specially designed to pass coupling attenuation tests at -85dB with cladding material that is compliant with CPR Cca s1,d1,a1.”

### ADVANTAGES

- Residential cable GRADE 3 TV for both network and TV
- Excellent electromagnetic immunity, compliant with -85dB limit for coupling attenuation (BEDEA tube)
- Compliant with CPR for Cca (s1, d1, a1)

### DESCRIPTION

For residential IP and TV cabling in compliance with the new standard XP C 90-483 version 2019.

Its special structure provides a bandwidth of 500 MHz for speeds of 10 Gbit/s.

Pair 7/8 (brown) has a maximum operating frequency of 2.2 GHz, ideal for TV transmissions including satellite.

### APPLICATION

- Ethernet base T up to 10 Gbit/s Pairs, 1, 2 and 3
- DTTV and Satellite on pair 4 (DVB-T/T2 and DVB-S/S2)
- IEEE 802.3 af/at/bt: PoE, PoE+ and 4PPoE

### STANDARDS

- **CABLE:** XPC 93-531-17
- **SYSTEM:** UTE C 90483 GRADE3 TV VERSION 2019

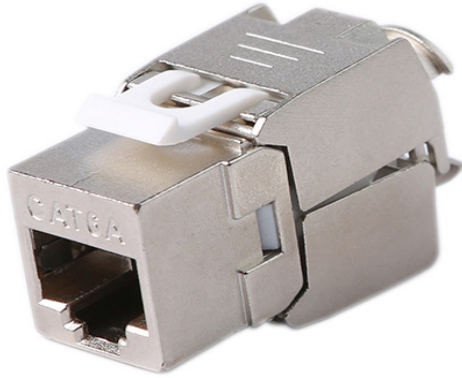
### ORDERING INFORMATION

| REF       | DESCRIPTION  | DIAMETER | PACKAGING     |
|-----------|--|----------|---------------|
| G3C4PFFTV | Cable 100 Ohm grade 3 TV 4P F/FTP 2.2 GHz LSZH Cca | 7.6 mm   | C.100m/T.500m |



# IDKJ6AS

## Jack RJ45 Cat.6A shielded 360°



### ADVANTAGES

- Quick connection, toolless, 360° ground stud
- Keystone format, shallow depth
- Pin connector compatible with large-diameter cables (such as Cat.7 and Grade3 TV)

### DESCRIPTION

Thanks to its excellent electrical performance, the RJ45 IDKJ6AS jack offers good NEXT and RETURN LOSS margins for Class Ea or Grade 3TV applications.

Its Keystone format and compact size make it compatible with all the accessories on the market.

### APPLICATION

- Ethernet base T up to 10 Gbit/s
- VoIP & ISDN
- IEEE 802.3 af/at/bt: PoE, PoE+ and 4PPoE
- Residential Grade 3 TV

### STANDARDS

- **CONNECTORS:** IEC 60603-7-51
- **SYSTEM:** ISO/IEC 11801 Ed3.0 Class Ea
- UTE XPC 90483



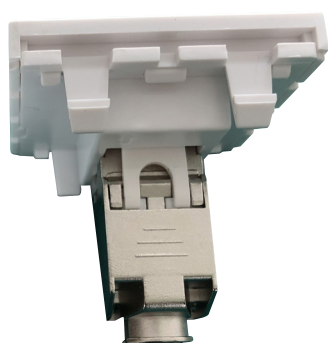
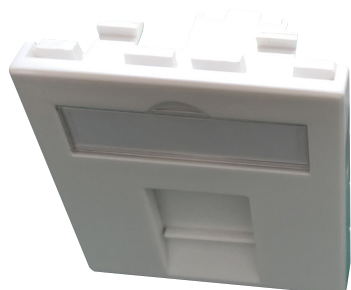
“An extremely practical product in all respects as it is easy to install and its excellent electrical performance means no unpleasant surprises when testing the cable installation: Compliance guaranteed! “

### ORDERING INFORMATION

| REF        | DESCRIPTION   | PACKAGING |
|------------|---|-----------|
| IDKJ6AS    | Jack RJ45 Cat.6A toolless - shielded 360° - in box    | 8         |
| IDKJ6AS100 | Jack RJ45 Cat.6A toolless - shielded 360° - in bucket | 100       |

# IDPLA6AS451C

## Socket RJ45 Cat.6A shielded 360°



Ideal for installation in tertiary environments as its 45x45 format is compatible with most supports: floor boxes, surface and pole mountings...it can be used anywhere.”

### ADVANTAGES

- Jack pre-installed on 45 faceplate for quick and handy installation
- Toolless connection, 360° ground stud
- Label holder and dust flap already installed
- Pin connector compatible with large-diameter cables (such as Cat.7 and Grade3 TV)

### DESCRIPTION

IDPLA6AS451C socket offers excellent performance for use in Class Ea or Grade 3TV.

The 45x45 format enables direct installation on clip supports.

### APPLICATION

- Ethernet base T up to 10 Gbit/s
- VoIP & ISDN
- IEEE 802.3 af/at/bt: PoE, PoE+ and 4PPoE
- Residential Grade 3 TV

### STANDARDS

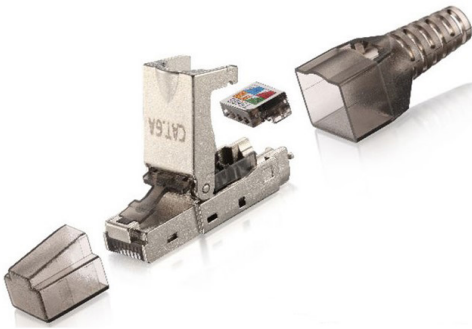
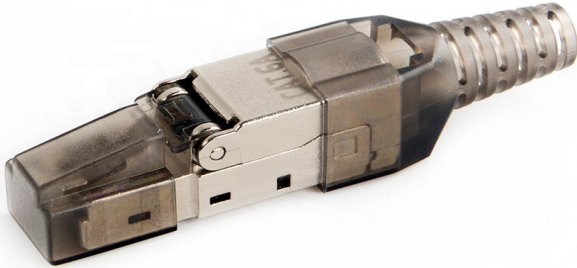
- **CONNECTORS:** IEC 60603-7-51
- **SYSTEM:** ISO/IEC 11801 Ed3.0 Class Ea
- UTE XPC 90483

## ORDERING INFORMATION

| REF          | DESCRIPTION  | PACKAGING |
|--------------|--|-----------|
| IDPLA6AS451C | Socket RJ45 Cat.6A, toolless, 360° shielding with faceplate 45x45 - in box | 8         |

# IDCORIG6AFS

## Connector RJ45 toolless Cat.6A 360° shielding



“This connector is perfect for direct connections to IP equipment: Wifi terminal, video surveillance camera, etc. No need to create a cut-off point as it can be mounted directly on the rigid cable.”

### ADVANTAGES

- Quick toolless connection in pin connector and 360° ground stud
- Protective cap to keep out dust and rear sleeve
- Compensation via printed circuit to guarantee excellent performance

### DESCRIPTION

Thanks to its excellent electrical performance and 360° shielding, the RJ45 IDCORIG6AFS field connector offers good NEXT and RETURN LOSS margins for Class Ea applications.

Its toolless pin connector guarantees a high-quality connection thanks to its clearly visible color code.

### APPLICATION

- Ethernet base T up to 10 Gbit/s
- VoIP & ISDN
- IEEE 802.3 af/at/bt: PoE, Poe+ and 4PPoE

### STANDARDS

- **SYSTEM:** ISO/IEC 11801 Ed3.0 Class Ea
- EIA/TIA 568.2-D Compliant with MPTL testing (Modular plug terminated link)

## ORDERING INFORMATION

| REF         | DESCRIPTION  | PACKAGING |
|-------------|--|-----------|
| IDCORIG6AFS | RJ45 field connector toolless Cat.6A 360° shielding - in box | 8         |

# IDCOUPL6A

## Coupler Cat.6A Fem/Fem RJ45



### ADVANTAGES

- Female/female coupler (extension) to extend lengths by adding RJ45 patch cords
- Keystone format, shielded and compact
- Creates an additional cut-off point but with almost no impact on performance thanks to its compensation circuit

### DESCRIPTION

IDCOUPL6A is a female/female coupler in keystone format.

Designed based on a high-performance printed circuit, it ensures continuity of transmission parameters.

### APPLICATION

- VDI tertiary and residential

### STANDARDS

- **SYSTEM:** ISO/IEC 11801 Ed3.0 (Channel)



“Very compact and efficient, it can be used to extend any connection, while guaranteeing high-quality transmission.”

## ORDERING INFORMATION

| REF       | DESCRIPTION                                | PACKAGING |
|-----------|--|-----------|
| IDCOUPL6A | RJ45 female/female shielded coupler Cat.6A | Unit      |



# IDCORD6A

## Patch cord Cat.6A S/FTP LSZH



“With its tab protection, it is easy to disconnect - even in confined spaces. It is designed to withstand bending and to continue to operate even after extensive handling.”

### ADVANTAGES

- Available in different lengths
- Excellent electromagnetic immunity provided by its S/FTP structure.
- LSZH sheathe with low smoke emission
- Molded sleeve with tab protection

### DESCRIPTION

Designed to guarantee optimal protection against electromagnetic interference.

The S/FTP patch cord makes it possible to obtain the performance of a Class Ea link extended up to 500 MHz.

### APPLICATION

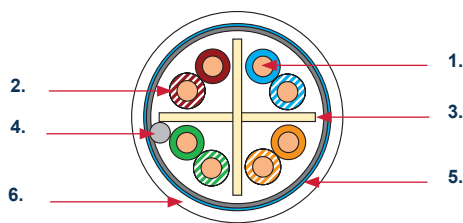
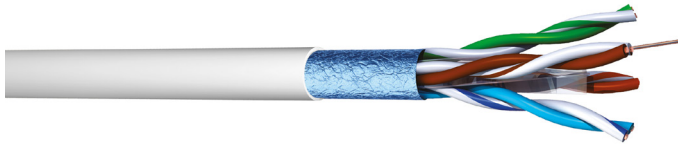
- Ethernet base T up to 10 Gbit/s
- VoIP & ISDN
- IEEE 802.3 af/at/bt: PoE, Poe+ and 4PPoE
- Residential Grade 3TV

### STANDARDS

- **CONNECTORS:** IEC 60603-7-51
- **SYSTEM:** ISO/IEC 11801 Ed3.0 Class Ea
- UTE XPC 90483

### ORDERING INFORMATION

| REF         | DESCRIPTION                        | LENGTH | PACKAGING |
|-------------|------------------------------------|--------|-----------|
| IDCORD6A005 | Patch cord Cat.6A S/FTP LSZH 0.5 m | 0.50 m | Unit      |
| IDCORD6A01  | Patch cord Cat.6A S/FTP LSZH 1 m   | 1 m    | Unit      |
| IDCORD6A02  | Patch cord Cat.6A S/FTP LSZH 2 m   | 2 m    | Unit      |
| IDCORD6A03  | Patch cord Cat.6A S/FTP LSZH 3 m   | 3 m    | Unit      |
| IDCORD6A05  | Patch cord Cat.6A S/FTP LSZH 5 m   | 5 m    | Unit      |
| IDCORD6A10  | Patch cord Cat.6A S/FTP LSZH 10 m  | 10 m   | Unit      |
| IDCORD6A15  | Patch cord Cat.6A S/FTP LSZH 15 m  | 15 m   | Unit      |



1. Core: Single-fiber annealed copper AWG23/1
2. Insulation: Polyethylene
3. Central member: Thermoplastic cross
4. Drain wire: Single-fiber tinned copper
5. Shielding: Al/PeS foil
6. Outer jacket: LSZH – white RAL 9003



“The reference in network cables, with excellent performance for the price. It is mainly used in the tertiary sector but can be used for all types of networks.”

### ADVANTAGES

- Perfect cable for all IP applications up to 1Gbit/s, or even 5 Gbits/s with the right switching equipment
- Has overall shielding made of aluminum to protect against interference.
- Compliant with CPR Dca classification

### DESCRIPTION

Used in a horizontal or backbone configuration (bypass), it is the basis for a high-speed VDI (Voice-Data-Image) network.

This cable can be used for transmission of digital and analog signals for voice, video links and data transmission up to 250 MHz.

### APPLICATION

- Ethernet base T up to 1 Gbit/s
- VoIP & ISDN
- IEEE 802.3 af/at/bt: PoE, PoE+ and 4PPoE

### STANDARDS

- **CABLE:** IEC 61156-5 CAT.6
- **SYSTEM:** ISO 11801 ED.3 CLASS E
- EIA/TIA 568-2.D CAT.6

### ORDERING INFORMATION

| REF           | DESCRIPTION                          | DIAMETER    | PACKAGING                     |
|---------------|--------------------------------------|-------------|-------------------------------|
| <b>F4P6SH</b> | Cable 100 Ohms F/UTP 4P Cat.6 LSZH   | 7 mm        | C.100m/Box305m/T.500m/T.1000m |
| <b>F8P6SH</b> | Cable 100 Ohms F/UTP 2X4P Cat.6 LSZH | 7 x 14.5 mm | C.100m/T.500m/T.1000m         |

# IDKJ6S

## Jack RJ45 Cat.6 shielded 360°



“An extremely practical product in all respects as it is easy to install and its excellent electrical performance means no unpleasant surprises when testing the cable installation: Compliance guaranteed! “

### ADVANTAGES

- Quick connection, toolless, 360° ground stud
- Keystone format, shallow depth
- Pin connector with direct view of color code

### DESCRIPTION

Thanks to its excellent electrical performance, the RJ45 IDKJ6S jack offers good NEXT and RETURN LOSS margins for Class Ea applications.

Its Keystone format and compact size make it compatible with all the accessories on the market.

### APPLICATION

- Ethernet base-T up to 1 Gbit/s (5 Gbit/s with suitable switch components)
- VoIP & ISDN
- IEEE 802.3 af/at: PoE, PoE+

### STANDARDS

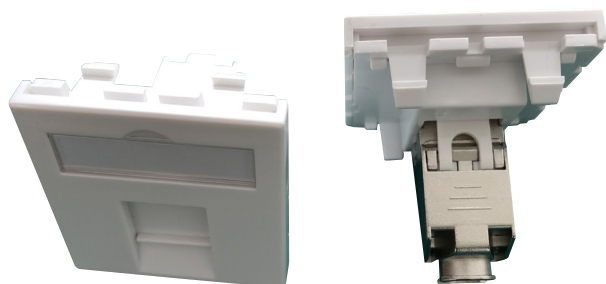
- **CONNECTORS:** IEC 60603-7
- **SYSTEM:** ISO/IEC 11801 Ed3.0 Class E

## ORDERING INFORMATION

| REF       | DESCRIPTION   | PACKAGING |
|-----------|---|-----------|
| IDKJ6S    | Jack RJ45 Cat.6 toolless - 360° shielding - in box    | 8         |
| IDKJ6S100 | Jack RJ45 Cat.6 toolless - 360° shielding - in bucket | 100       |

# IDPLA6S451C

## Socket RJ45 Cat.6 shielded 360°



Ideal for installation in tertiary environments as its 45x45 format is compatible with most supports: floor boxes, surface and wall mountings...it can be used anywhere."

### ADVANTAGES

- Jack pre-installed on 45 faceplate for quick and handy installation
- Toolless connection, 360° ground stud
- Label holder and dust flap already installed

### DESCRIPTION

The IDPLA6S451C socket offers excellent performance for use in Class E.

The 45x45 format enables direct installation on clip supports.

### APPLICATION

- Ethernet base-T up to 1 Gbit/s (5 Gbits/s with suitable switch components)
- VoIP & ISDN
- IEEE 802.3 af/at: PoE, PoE+

### STANDARDS

- **CONNECTORS:** IEC 60603-7
- **SYSTEM:** ISO/IEC 11801 Ed3.0 Class E

## ORDERING INFORMATION

| REF         | DESCRIPTION   | PACKAGING |
|-------------|---|-----------|
| IDPLA6S451C | Socket RJ45 Cat.6, toolless, 360° shielding with faceplate 45x45 - in box | 8         |



“A cost-effective solution to quickly hook up any type of equipment with a rigid cable. It does require a suitable crimping tool and a large-diameter sleeve.”

### ADVANTAGES

- Plug RJ45 shielded, suitable for rigid cables AWG23
- Diameter on insulator between 1.2 mm < OD < 1.5 mm
- Nominal outer diameter of cable of 7.50 mm +/- 0.25 mm
- Gold 50-micron contacts to offer the lowest possible resistivity and therefore the best performance for the connection

### DESCRIPTION

Thanks to its excellent electrical performance, the RJ45 IDPLUG6S plug offers good margins for Class E applications.

The pin connector strip makes it possible to connect rigid cables with large-diameter fibers.

This is an essential accessory for direct-connection hook-ups.

### APPLICATION

- Ethernet base-T up to 1 Gbit/s (5 Gbit/s with suitable switch components)
- VoIP & ISDN
- IEEE 802.3 af/at: PoE, PoE+

### STANDARDS

- **CONNECTORS:** IEC 60603-7
- **SYSTEM:** ISO/IEC 11801 Ed3.0 Class E

## ORDERING INFORMATION

| REF      | DESCRIPTION   | PACKAGING |
|----------|---|-----------|
| IDPLUG6S | Plug RJ45 Cat.6 shielded for large-diameter rigid fibers - in box | 100       |



“With its tab protection, it is easy to disconnect - even in confined spaces. It is designed to withstand bending and to continue to operate even after extensive handling.”

### ADVANTAGES

- Available in different lengths
- Good electromagnetic immunity provided by its FTP structure.
- Molded sleeve with tab protection

### DESCRIPTION

This Category 6 patch cord is designed to guarantee Class E performance in a VDI installation.

### APPLICATION

- Ethernet base T up to 1 Gbit/s
- VoIP & ISDN
- IEEE 802.3 af/at: PoE, PoE+

### STANDARDS

- **CONNECTORS:** IEC 60603-7
- **SYSTEM:** ISO/IEC 11801 Ed3.0 Class E

## ORDERING INFORMATION

| REF        | DESCRIPTION                | LENGTH | PACKAGING |
|------------|----------------------------|--------|-----------|
| IDCORD6005 | Patch cord Cat.6 FTP 0.5 m | 0.50 m | Unit      |
| IDCORD601  | Patch cord Cat.6 FTP 1 m   | 1 m    | Unit      |
| IDCORD602  | Patch cord Cat.6 FTP 2 m   | 2 m    | Unit      |
| IDCORD603  | Patch cord Cat.6 FTP 3 m   | 3 m    | Unit      |
| IDCORD605  | Patch cord Cat.6 FTP 5 m   | 5 m    | Unit      |
| IDCORD610  | Patch cord Cat.6 FTP 10 m  | 10 m   | Unit      |
| IDCORD615  | Patch cord Cat.6 FTP 15 m  | 15 m   | Unit      |

CAT 6



# IDPAN1U24

## Patch panel 1U 24 Ports with ground



### ADVANTAGES

- Panel with 24 ports, built-in grounding and rear support
- Built-in label holder, numbered 1 to 24
- Epoxy Paint - Black RAL 9005

### DESCRIPTION

The RJ45 patch panel IDPAN1U24 includes a label holder. It provides optimized cabling management and grounding via its double skin.

It also comes equipped with a rear support and a grounding stud.

### APPLICATION

- VDI tertiary and residential

### STANDARDS

- **SYSTEM:** ISO/IEC 11801 Ed3.0



"This light-weight and handy panel offers high quality and an elegant finishing for your network installation."

## ORDERING INFORMATION

| REF       | DESCRIPTION             | PACKAGING |
|-----------|-------------------------|-----------|
| IDPAN1U24 | Patch panel 1U 24 ports | Unit      |

# IDPLA45

## Faceplate 1 or 2 ports RJ - 45 mm x 45 mm



ACCESS: FOR CONNECT: RJ45

### ADVANTAGES

- Faceplate equipped with dust flap and rotatable label holder
- Several attachment points to make sure it remains secured in cable trays and floor boxes
- "Pure" white RAL 9003

### DESCRIPTION

The IDPLA45x faceplates in 45x45 format are suitable for almost any support (cable trays, junction boxes, floor boxes).

They are straight and come equipped with a sliding dust flap and a large rotatable label holder.

### APPLICATION

- VDI tertiary and residential

### STANDARDS

- **SYSTEM:** ISO/IEC 11801 Ed3.0



"It is injected with high-quality materials, in particular a UV stabilizer to ensure excellent durability. No fading or yellowing even after years in service."

## ORDERING INFORMATION

| REF         | DESCRIPTION   | PACKAGING |
|-------------|---|-----------|
| IDPLA451    | Faceplate 1 port RJ format 45x45 - in box             | 8         |
| IDPLA451INC | Faceplate 1 port RJ format 45x45 at 45°angle - in box | 8         |
| IDPLA452    | Faceplate 2 ports RJ format 45x45 - in box            | 8         |



### ADVANTAGES

- A surface-mount box and faceplate in the same bag
- Comes equipped with dust flap and rotatable label holder
- The RJ45 connector support is made of Zamac to ensure ground continuity
- "Pure" white RAL 9003

### DESCRIPTION

The IDSAIL80 is a complete kit for a surface-mounted installation of a RJ45 socket in the Keystone format.

### APPLICATION

- VDI tertiary and residential



"An all-in-one product to install an RJ45 port even when no clipping equipment is available."

### STANDARDS

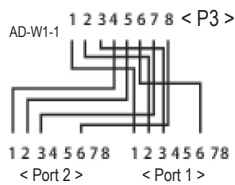
- **SYSTEM:** ISO/IEC 11801 Ed3.0

## ORDERING INFORMATION

| REF      | DESCRIPTION  | PACKAGING |
|----------|--|-----------|
| IDSAIL80 | Kit with surface-mounted box and 80x80 faceplate for 1 RJ port | Unit      |

# IDECLAT6

## Splitter Cat.6 RJ45 2 ports



“When it is not possible to install another link, this is the ideal product to operate two devices on one cable.

Warning! It operates in pairs because it must be installed on both ends of the link.”

### ADVANTAGES

- Splitter 2 x pair 1/2 and pair 3/6 for 2 connections in 100 base T
- 15 cm cable for offset connections

### DESCRIPTION

The IDECLAT6 is a splitter for RJ45 sockets. It uses the non-functional pairs in 100 base T to double the capacity of a cable.

Makes it possible to operate 2 devices in 100 base T on a single 4-pair cable.

### APPLICATION

- VDI tertiary and residential

### STANDARDS

- **SYSTEM:** ISO/IEC 11801 Ed3.0

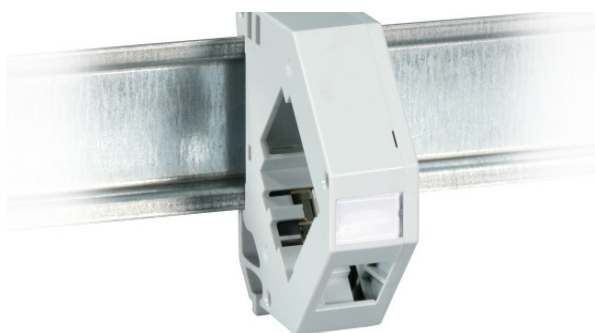
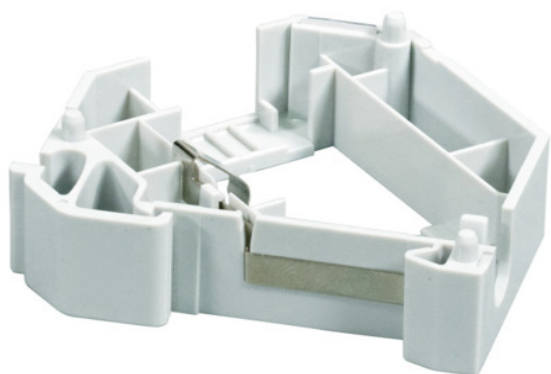
ACCESS: FOR  
CONNECT: RJ45

## ORDERING INFORMATION

| REF      | DESCRIPTION                             | PACKAGING |
|----------|---|-----------|
| IDECLAT6 | Splitter RJ45 Male to 2 females - Cat.6 | Unit      |

# IDRJDIN1P

## DIN support for RJ45 - 1 port



“DIN rails are extremely common in residential networks and industrial environments. This adapter makes it easy to add sockets to cabinets that are not necessarily used only for VDI systems.”

### ADVANTAGES

- DIN support for RJ45 Keystone, thermoplastic
- Equipped with grounding in direct contact with the DIN rail
- Comes equipped with label holder

### DESCRIPTION

This support is used to fasten an RJ45 connector in the Keystone format onto a DIN rail.

It is particularly well suited for electrical cabinets when adding a RJ45 socket.

### APPLICATION

- VDI for tertiary, residential and industry

### STANDARDS

- **SYSTEM:** ISO/IEC 11801 Ed3.0

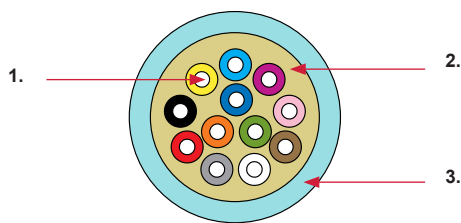
## ORDERING INFORMATION

| REF       | DESCRIPTION                          | PACKAGING |
|-----------|--------------------------------------|-----------|
| IDRJDIN1P | DIN support for RJ45 Keystone format | Unit      |

CAT 6



## FO cable tight structure Indoor/outdoor



1. Fiber-optic, loose structure
2. Glass yarn
3. LSZH sheathe



“This multi-purpose cable is a true chameleon that can be used almost anywhere, both inside and outside in protected environments: for bypass, distribution, etc.

### ADVANTAGES

- Cable with tight structure for direct connections
- Moderate protection against rodents and limited waterproofing
- Flame retardant

### DESCRIPTION

Fiber-optic cable with tight structure 900 µm and color code IEC 304.

It has anti-moisture fiberglass protection and a LSZH outer jacket with UV protection.

### APPLICATION

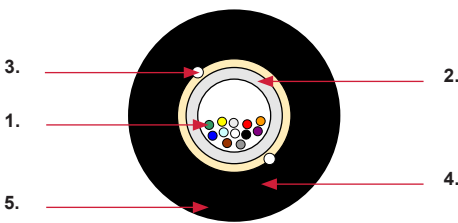
- Ethernet up to 400 Gbit/s
- For outdoor layouts or protected indoor/outdoor connections

### STANDARDS

- Multi-mode IEC 60793-2-10
- Single-mode IEC 60793-2-50
- **FIRE RESISTANCE:** IEC 60332-1
- CPR: Dca

### ORDERING INFORMATION

| REF        | DESCRIPTION   | PACKAGING                 |
|------------|---|---------------------------|
| 6FOSIEOM3  | 6 FO Indoor/outdoor tight structure OM3 LSZH Turquoise  | T.2000m/customized length |
| 6FOSIEOS2  | 6 FO Indoor/outdoor tight structure OS2 LSZH Yellow     | T.2000m/customized length |
| 12FOSIEOM3 | 12 FO Indoor/outdoor tight structure OM3 LSZH Turquoise | T.2000m/customized length |
| 12FOSIEOS2 | 12 FO Indoor/outdoor tight structure OS2 LSZH Yellow    | T.2000m/customized length |
| 24FOSIEOM3 | 24 FO Indoor/outdoor tight structure OM3 LSZH Turquoise | T.2000m/customized length |
| 24FOSIEOS2 | 24 FO Indoor/outdoor tight structure OS2 LSZH Yellow    | T.2000m/customized length |



1. Fiber optic: loose structure
2. Center tube filled with sealing gel
3. Anti-moisture glass fiber
4. Ripcord
5. Outer jacket: LSZH



“The perfect compromise for a connection between the inside and the outside of a building, as this cable can withstand changing climactic conditions (humidity, temperature variations and UV) and is also flame retardant. However, it is recommended to install this cable in a protected environment. “

### ADVANTAGES

- Moderate protection against rodents
- Good waterproofing for universal usage
- LSZH sheathe, black for good UV resistance
- Flame retardant

### DESCRIPTION

Fiber-optic cable with loose structure 250 µm and color code IEC 304.

It has a center tube filled with sealing gel, anti-moisture fiberglass protection and an LSZH and UV-resistant outer jacket.

### APPLICATION

- Ethernet up to 400 Gbit/s
- Indoor/outdoor connections
- For hook-ups between buildings or directly in cable trays
- Connection by splicing or with individual tubes

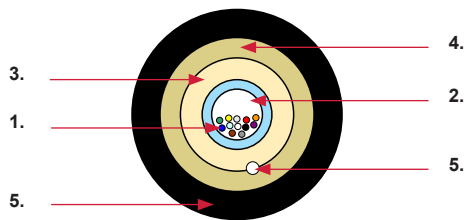
### STANDARDS

- Multi-mode IEC 60793-2-10
- Single-mode IEC 60793-2-50
- **FIRE RESISTANCE:** IEC 60332-1
- CPR: Dca

### ORDERING INFORMATION

| REF               | DESCRIPTION   | PACKAGING                 |
|-------------------|---|---------------------------|
| <b>6FOLIEOM3</b>  | 6 FO Inside/outside loose structure OM3 LSZH Black  | T.2000m/customized length |
| <b>6FOLIEOS2</b>  | 6 FO Inside/outside loose structure OS2 LSZH Black  | T.2000m/customized length |
| <b>12FOLIEOM3</b> | 12 FO Inside/outside loose structure OM3 LSZH Black | T.2000m/customized length |
| <b>12FOLIEOS2</b> | 12 FO Inside/outside loose structure OS2 LSZH Black | T.2000m/customized length |
| <b>24FOLIEOM3</b> | 24 FO Inside/outside loose structure OM3 LSZH Black | T.2000m/customized length |
| <b>24FOLIEOS2</b> | 24 FO Inside/outside loose structure OS2 LSZH Black | T.2000m/customized length |

FO cable loose structure armored outdoor



1. Fiber optic: loose structure
2. Center tube filled with sealing gel
3. Anti-moisture glass fiber
4. Corrugated steel armor
5. Ripcord
6. Outer jacket: HDPE



“Suitable for links between buildings, in conduits or by direct burial. Its corrugated steel foil armor is the best protection available, and offers a real barrier against rodents!”

**ADVANTAGES**

- Excellent waterproofing
- High crushing resistance
- Can be buried without protection
- Sheathe of black polyethylene for good UV resistance

**DESCRIPTION**

Fiber-optic cable with loose structure 250 µm and color code IEC 304.

It has a center tube filled with sealing gel, anti-moisture fiberglass protection, corrugated steel armor and an outer jacket in HDPE.

**APPLICATION**

- Ethernet up to 400 Gbit/s
- Outside connections
- Connection by splicing or with individual tubes

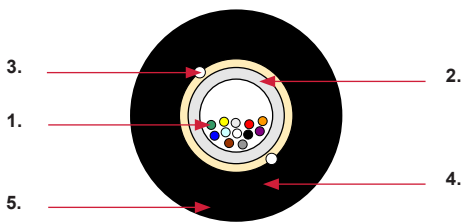
**STANDARDS**

- Multi-mode IEC 60793-2-10
- Single-mode IEC 60793-2-50

**ORDERING INFORMATION**

| REF               | DESCRIPTION                                  | PACKAGING                 |
|-------------------|--|---------------------------|
| <b>6FOLAEOM3</b>  | 6 FO outside loose structure OM3 HDPE Black  | T.2000m/customized length |
| <b>6FOLAEOS2</b>  | 6 FO outside loose structure OS2 HDPE Black  | T.2000m/customized length |
| <b>12FOLAEOM3</b> | 12 FO outside loose structure OM3 HDPE Black | T.2000m/customized length |
| <b>12FOLAEOS2</b> | 12 FO outside loose structure OS2 HDPE Black | T.2000m/customized length |
| <b>24FOLAEOM3</b> | 24 FO outside loose structure OM3 HDPE Black | T.2000m/customized length |
| <b>24FOLAEOS2</b> | 24 FO outside loose structure OS2 HDPE Black | T.2000m/customized length |

## FO cable loose structure outside



- 1. Fiber optic: loose structure
- 2. Center tube filled with moisture-resistant gel
- 3. Anti-moisture glass yarn
- 4. Ripcords
- 5. Outer jacket: HDPE



“A compact structure with a center tube to protect the optical fibers even under severe external conditions.”

### ADVANTAGES

- Good protection against rodents
- Excellent waterproofing
- Complete dielectric armor
- Sheathe of black polyethylene for good UV resistance

### DESCRIPTION

Fiber-optic cable with loose structure 250 μm and color code IEC 304.

It has a center tube filled with moisture-resistant gel, anti-moisture fiberglass armor and a polyethylene outer jacket.

### APPLICATION

- Ethernet up to 400 Gbit/s
- Outside connections only
- Connection by splicing or with individual tubes

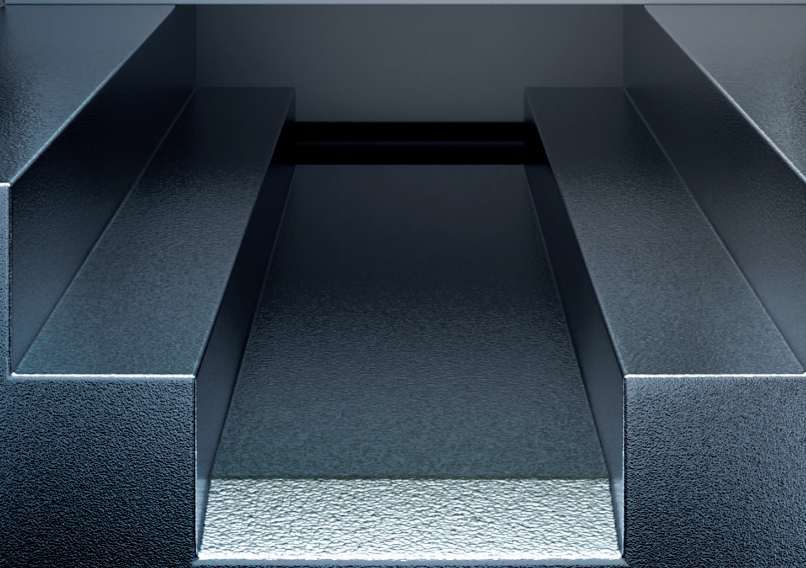
### STANDARDS

- Multi-mode IEC 60793-2-10
- Single-mode IEC 60793-2-50

## ORDERING INFORMATION

| REF       | DESCRIPTION  | PACKAGING                 |
|-----------|--|---------------------------|
| 6FOLEOS2  | 6 FO outside loose structure OS2 HDPE sheathe Black  | T.2000m/customized length |
| 12FOLEOS2 | 12 FO outside loose structure OS2 HDPE sheathe Black | T.2000m/customized length |

CAT 6A



# IDPACK10POUCES

Pack cabinet 10-inch Cat.6A

## ADVANTAGES

- Complete pack for installation of 8 terminal points
- Compact cabinet, easy to install on walls
- Includes a 10/100/1000 mbit/s Ethernet switch to dispatch Ethernet gigabits on the entire installation



## DESCRIPTION

The IDPACK10POUCES 10-inch cabinet has an elegant design and a reinforced structure enabling a static load of up to 10 kg. Comes in black.

It can be installed in all office and residential environments, while offering the perfect starting point for cable distribution.

The delivered pack is to be assembled. It can be used for an end-to-end installation of VDI Cat6A cabling and to connect switching equipment to the network via its Ethernet gigabit switch.

CABINET 10"  
CAT6A pack

## ORDERING INFORMATION

| REF            | NO. OF U | DESCRIPTION  | DIMENSION<br>Height/Width/Depth |
|----------------|----------|--|---------------------------------|
| IDPACK10POUCES | 6U       | Small pack tertiary 10-inch Cat.6A<br>Cabinet 6U + shelf + PDU + switch 8P 10/100/1000<br>Jacks Cat.6A + panel 12 ports + faceplate + cords 50 cms | 350 x 312 x 300                 |
| IDPAN1U12      | 1U       | Panel 12 ports   |                                 |

# IDCOFxxU450

Cabinet 19-inch depth of 450 mm



## ADVANTAGES

- Elegant design, with system for direct mounting on wall
- 19-Inch frame with built-in grounding
- Reinforced structure enabling a static load of up to 90 kg
- Front door opens 180°

## DESCRIPTION

The IDCOFxxU450 19-inch cabinet has an elegant design and a reinforced structure enabling a static load of up to 90 kg.

It can be installed in all office and residential environments, while offering the perfect starting point for cable distribution.

The pre-assembled cabinet can easily be mounted on the wall by one person, meaning faster installation times. It comes with a system for mounting directly on the wall.

Color: black RAL9005  
Protection rating: IP20



“A discrete cabinet with a robust structure for all medium-size VDI network installations. Its easy mounting system means only one person is required to install it! “

## ORDERING INFORMATION

| REF         | NO. OF U | DESCRIPTION           | MAXIMUM LOAD | DIMENSION          |
|-------------|----------|-----------------------|--------------|--------------------|
|             |          |                       |              | Height/Width/Depth |
| IDCOF6U450  | 6U       | Cabinet 19" 6U P.450  | 40 kg        | 370.50 x 600 x 450 |
| IDCOF9U450  | 9U       | Cabinet 19" 9U P.450  | 40 kg        | 503.80 x 600 x 450 |
| IDCOF12U450 | 12U      | Cabinet 19" 12U P.450 | 50 kg        | 637.20 x 600 x 450 |
| IDCOF15U450 | 15U      | Cabinet 19" 15U P.450 | 50 kg        | 770.50 x 600 x 450 |
| IDCOF18U450 | 18U      | Cabinet 19" 18U P.450 | 60 kg        | 903.90 x 600 x 450 |
| IDCOF22U450 | 22U      | Cabinet 19" 22U P.450 | 90 kg        | 1081 x 600 x 450   |

# IDCOFxxU600

Cabinet 19-inch depth of 600 mm



## ADVANTAGES

- Elegant design, with system for direct mounting on wall
- 19-Inch frame with built-in grounding
- Reinforced structure enabling a static load of up to 90 kg
- Front door opens 180°

## DESCRIPTION

The IDCOFxxU600 19-inch cabinet has an elegant design and a reinforced structure enabling a static load of up to 90 kg.

It can be installed in all office and residential environments, while offering the perfect starting point for cable distribution.

The pre-assembled cabinet can easily be mounted on the wall by one person, meaning faster installation times. It comes with a system for mounting directly on the wall.

Color: black RAL9005  
Protection rating: IP20



“With a depth of 600 mm, this cabinet can house IPBX or IP encoders. In all configurations, the rear 19-inch vertical supports are adjustable.”

19" CABINETS

## ORDERING INFORMATION

| REF         | NO. OF U | DESCRIPTION           | MAXIMUM LOAD | DIMENSION<br>Height/Width/Depth |
|-------------|----------|-----------------------|--------------|---------------------------------|
| IDCOF6U600  | 6U       | CABINET 19" 6U P.600  | 40 kg        | 370.50 x 600 x 600              |
| IDCOF9U600  | 9U       | CABINET 19" 9U P.600  | 40 kg        | 503.80 x 600 x 600              |
| IDCOF12U600 | 12U      | CABINET 19" 12U P.600 | 50 kg        | 637.20 x 600 x 600              |
| IDCOF15U600 | 15U      | CABINET 19" 15U P.600 | 50 kg        | 770.50 x 600 x 600              |
| IDCOF18U600 | 18U      | CABINET 19" 18U P.600 | 60 kg        | 903.90 x 600 x 600              |
| IDCOF22U600 | 22U      | CABINET 19" 22U P.600 | 90 kg        | 1081 x 600 x 600                |



### ADVANTAGES

- Elegant design and reinforced structure enabling a static load of up to 600 kg
- 19-Inch front/rear vertical supports with built-in grounding
- Upper and lower cable pass-through (adjustable) with rubber protection to prevent cable damage
- Removable and lockable side panels

### DESCRIPTION

IDBAIE 19-inch floor-standing cabinet has an elegant design and a reinforced structure enabling a static load of up to 600 kg.

The front doors of the cabinets are made of 4 mm-thick tempered glass and equipped with a 3-point key locking system. Rotates via removable hinges, which make it easy to remove the doors.

The side panels are also easy to remove, and can be locked with a key.

The cables can be passed through the top or bottom via the dedicated openings.

Color: black RAL9005  
Protection rating: IP20

### ORDERING INFORMATION

| REF         | NO. OF U | DESCRIPTION                               | MAXIMUM LOAD | DIMENSION<br>Height/Width/Depth |
|-------------|----------|---|--------------|---------------------------------|
| IDBAIE2666  | 26U      | Floor-standing cabinet 19" 26U 600 X 600  | 600 kg       | 1292 X 600 X 600                |
| IDBAIE3266  | 32U      | FLOOR-STANDING CABINET 19" 32U 600 X 600  | 600 kg       | 1561 X 600 X 600                |
| IDBAIE3766  | 37U      | FLOOR-STANDING CABINET 19" 37U 600 X 600  | 600 kg       | 1782 X 600 X 600                |
| IDBAIE4266  | 42U      | FLOOR-STANDING CABINET 19" 42U 600 X 600  | 600 kg       | 2004 X 600 X 600                |
| IDBAIE4268  | 42U      | FLOOR-STANDING CABINET 19" 42U 600 X 800  | 600 kg       | 2004 X 600 X 800                |
| IDBAIE4288  | 42U      | FLOOR-STANDING CABINET 19" 42U 800 X 800  | 600 kg       | 2004 X 800 X 800                |
| IDBAIE42810 | 42U      | FLOOR-STANDING CABINET 19" 42U 800 X 1000 | 600 kg       | 2204 X 800 X 1000               |
| IDBAIE4788  | 47U      | FLOOR-STANDING CABINET 19" 47U 800 X 800  | 600 kg       | 2227 X 800 X 800                |



### ADVANTAGES

- Doors, front and rear, perforated (63%)
- Reinforced structure enabling a static load of up to 1500 kg
- Upper and lower cable passage, multiple Hatches or pass-throughs with brushes.
- Saloon doors, front and rear. Removable and lockable side panels
- Series production, reinforced locks and wheels with brakes

### DESCRIPTION

The IDBAIESERV810 19-inch server cabinet was specially designed for extensive use and can hold switching equipment up to a weight of 1,500 kg.

The front and rear doors are made of perforated metal to ensure maximum ventilation.

The side panels are easy to remove, and can be locked with a key.

The cables can be passed through the top or bottom via the dedicated openings, and are protected by pass-throughs with brushes.

Color: black RAL9005  
Protection rating: IP20

CABINETS 19"

### ORDERING INFORMATION

| REF           | NO. OF U | DESCRIPTION                       | MAXIMUM LOAD | DIMENSION<br>Height/Width/Depth |
|---------------|----------|-----------------------------------|--------------|---------------------------------|
| IDBAIESERV810 | 42U      | Server cabinet 19" 42U 800 x 1000 | 1,500 kg     | 2017 x 800 x 1000               |

# IDROULET

## Wheel kit for 19-inch cabinet



### ADVANTAGES

- Kit with 4 wheels
- The wheels are installed directly on the cabinet frame via 4 threaded supports.

### DESCRIPTION

The kit includes 4 wheels that can be installed directly on the IDCOF cabinets in the GENESIA range.

This is a very handy accessory when you want to make the installation movable or easily accessible (soundproofing or residential applications).

### APPLICATION

- VDI tertiary and residential: Mobile installation



“The ideal kit to make the cabinet movable, which is very handy for installations beneath desks, for example.”

### STANDARDS

- **SYSTEM:** ISO/IEC 11801 Ed3.0

## ORDERING INFORMATION

| REF      | DESCRIPTION                         | PACKAGING |
|----------|-------------------------------------|-----------|
| IDROULET | KIT with 4 wheels for IDCOF cabinet | Unit      |

# IDVENTIL1

## Fan unit for 19-inch cabinet



“It is extremely important to remove hot air flows to ensure a long service life for the switching equipment. This fan gets the job done in complete silence.”

### ADVANTAGES

- Fan unit, can be installed directly on the cabinet frame
- DC power supply 220v/230v 50 Hz - supplied with power cord

### DESCRIPTION

Heat extraction fan, installed directly on the 19-inch cabinets in the GENESIA range.  
Up to 2 fans can be installed in each cabinet.

Materials:  
Thermoplastic and Aluminum - Black - RAL 9005

### APPLICATION

- VDI tertiary and residential

### STANDARDS

- **SYSTEM:** ISO/IEC 11801 Ed3.0

19" CABINETS  
ACCESS.

### ORDERING INFORMATION

| REF       | DESCRIPTION                  | PACKAGING |
|-----------|------------------------------|-----------|
| IDVENTIL1 | Fan unit for 19-inch cabinet | Unit      |

## Screws, washers and cage nuts for fastening of 19-inch accessories



### ADVANTAGES

- Standard format, compatible with the majority of 19-inch accessories.
- 2 packaging formats available  
Box with 50 pieces or bucket with 200 pieces with separate compartments and a handle

### DESCRIPTION

Set of cage nuts, washers and screws, size M6, to fasten all types of 19-inch accessories.

The separate compartments in the 200-piece bucket allow you to carry the fasteners everywhere you go, and to avoid mixing up the components in order to save time.

### APPLICATION

- VDI tertiary and residential



“A kit with high-quality fasteners and smart packaging ideally suited for work sites.”

### STANDARDS

- **SYSTEM:** ISO/IEC 11801 Ed3.0

## ORDERING INFORMATION

| REF      | DESCRIPTION                                   | PACKAGING |
|----------|---|-----------|
| IDVEC50  | Screws, washers and cage nuts - box of 50     | Unit      |
| IDVEC200 | Screws, washers and cage nuts - bucket of 200 | Unit      |

# IDALIM8x

## Power strip 19-inch 8 sockets



“NF and CE certified, these are high-quality power strips. They can be used to supply switches, routers or any other computer equipment.”

### ADVANTAGES

- Power strip, 8 rackable aluminum sockets, 19-inch, with or without power switch
- Complies with NF 61-314 standard and CE certified
- DC power 220v/230v 50 Hz with 2 m power cord and French UTE plug
- The sockets are at a 45° angle to make them easily accessible

### DESCRIPTION

The power strip includes 8 2P+T sockets in anodized aluminum, and can be racked directly in a 19-inch cabinet (wall or floor).

The IDALIM8I model is equipped with an illuminated switch so that you can immediately see if it is turned on or off.

The 2-meter H05VVf 3G1.5mm<sup>2</sup> power cord is extremely resistant, in particular to abrasion.

### APPLICATION

- VDI tertiary and residential

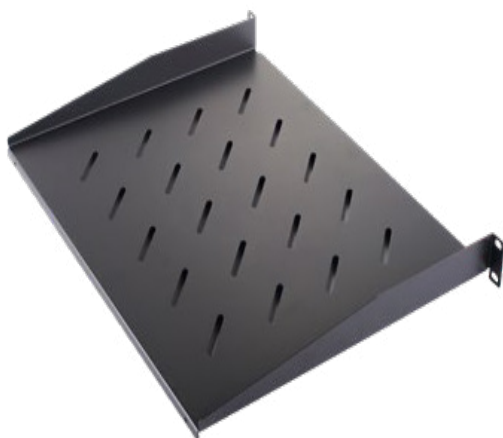
### STANDARDS

- NF 61314

19" CABINETS  
ACCESS.

### ORDERING INFORMATION

| REF      | DESCRIPTION   | PACKAGING |
|----------|---|-----------|
| IDALIM8I | Power strip, aluminum, 8 sockets with on/off switch - 19 inches | Unit      |
| IDALIM8  | Power strip, aluminum, 8 sockets - 19 inches                    | Unit      |



“Suitable for adding all types of non-rackable devices (routers, fiber-optic modems, amplifiers, etc.), this shelf can be used to store any 19-inch device you need.”

### ADVANTAGES

- Perforated for natural cooling
- Mounted via cage nuts directly on the vertical supports
- Maximum load of up to 20 kg

### DESCRIPTION

19-Inch perforated shelves that can be mounted directly on the 19-inch vertical supports of IDCOF and IDBAIE cabinets. They can be used to store many different types of devices (routers, Internet boxes, etc.).

Materials: Metal - Black: RAL 9005.  
Exists in 1U or 2U with different depths.

### APPLICATION

- VDI tertiary and residential

### STANDARDS

- **SYSTEM:** ISO/IEC 11801 Ed3.0

## ORDERING INFORMATION

| REF           | DESCRIPTION                 | PACKAGING |
|---------------|-----------------------------|-----------|
| IDPLFIX1U250  | Fixed shelf 1U depth 250 mm | Unit      |
| IDPLFIX2U250  | Fixed shelf 2U depth 250 mm | Unit      |
| IDPLFIX1U450  | Fixed shelf 1U depth 450 mm | Unit      |
| IDPLFIX 2U450 | Fixed shelf 2U depth 450 mm | Unit      |
| IDPLFIX1U600  | Fixed shelf 1U depth 600 mm | Unit      |
| IDPLFIX 2U600 | Fixed shelf 2U depth 600 mm | Unit      |

# IDPASSF1U

## Cable pass-through with brush strip 1U 19-inch



“An effective accessory to organize copper and fiber-optic patch cords. The brushes also prevent any dust from entering the cabinet.”

### ADVANTAGES

- Optimizes the organization of all types of cabinets
- Direct fastening with cage nuts

### DESCRIPTION

A must-have accessory to organize patch cords in 19-inch wall-mounted or floor-standing cabinets.

Large openings to pass through as many cords as possible.

Materials: Metal and thermoplastic - Black - RAL 9005

### APPLICATION

- VDI tertiary and residential

### STANDARDS

- **SYSTEM:** ISO/IEC 11801 Ed3.0

19" CABINETS ACCESS.

### ORDERING INFORMATION

| REF       | DESCRIPTION                                    | PACKAGING |
|-----------|--|-----------|
| IDPASSF1U | Cable pass-through with brush strip 1U 19-inch | Unit      |

# IDGUIDC1U

## Cable guide 4 clips 19-inch



“Rigid clips to hold in place the patch cords and organize flows, even when very dense.”

### ADVANTAGES

- Makes it much easier to organize your patch cords
- Direct fastening with cage nuts

### DESCRIPTION

The IDGUIDC1U cable guide is ideal to organize your floor-standing or wall-mounted cabinets and patch panels.

The 4 metal clips have sufficient depth to provide space for 24 cords.

Materials: Metal - Black - RAL 9005

### APPLICATION

- VDI tertiary and residential

### STANDARDS

- **SYSTEM:** ISO/IEC 11801 Ed3.0

## ORDERING INFORMATION

| REF       | DESCRIPTION                    | PACKAGING |
|-----------|--------------------------------|-----------|
| IDGUIDC1U | Cable guide 1U 4 clips 19-inch | Unit      |

# IDOB1U

## Blanking plate 1U 19-inch



“Pleasing to the eye, but also offering much more: it insulates the interior of the cabinet from hot air flows.”

### ADVANTAGES

- Used to blank the open spaces on the wall-mounted or floor-standing cabinets to guarantee front/rear air flow.
- Direct fastening with cage nuts

### DESCRIPTION

The IDOB1U blanking plates provide top-quality finishing for your installations, and prevent any mixing of hot/cold air flows.

Materials: Metal - Black - RAL 9005

### APPLICATION

- VDI tertiary and residential

### STANDARDS

- **SYSTEM:** ISO/IEC 11801 Ed3.0

19" CABINETS ACCESS.

## ORDERING INFORMATION

| REF    | DESCRIPTION               | PACKAGING |
|--------|---------------------------|-----------|
| IDOB1U | Blanking plate 1U 19-inch | Unit      |



“Whether UHD or 4K, this patch cord provides a high-quality connection to make the most of high-definition video sources.”

### ADVANTAGES

- Available in different lengths
- HDMI connector, gold contacts
- Compatible with Quad TV and 4K

### DESCRIPTION

The HDMI 2.0 GENESIA patch cords maintain the quality of the image, while guaranteeing an optimum connection between the equipment and the screen.

### APPLICATION

- Audio/Video HDMI

### STANDARDS

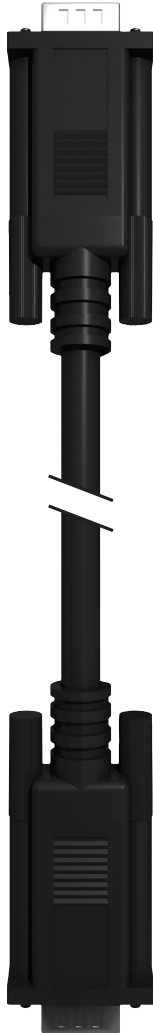
- Quad TV
- 4K

## ORDERING INFORMATION

| REF       | DESCRIPTION                            | LENGTH | PACKAGING |
|-----------|--|--------|-----------|
| IDCH2MI01 | Patch cord HDMI 2.0 Male/Male 1-meter  | 1 m    | Unit      |
| IDCH2MI02 | Patch cord HDMI 2.0 Male/Male 2-meter  | 2 m    | Unit      |
| IDCH2MI03 | Patch cord HDMI 2.0 Male/Male 3-meter  | 3 m    | Unit      |
| IDCH2MI05 | Patch cord HDMI 2.0 Male/Male 5-meter  | 5 m    | Unit      |
| IDCH2MI10 | Patch cord HDMI 2.0 Male/Male 10-meter | 10 m   | Unit      |
| IDCH2MI15 | Patch cord HDMI 2.0 Male/Male 15-meter | 15 m   | Unit      |
| IDCH2MI20 | Patch cord HDMI 2.0 Male/Male 20-meter | 20 m   | Unit      |

# IDCORDVGA

## Patch cord VGA male



### ADVANTAGES

- Available in different lengths.
- Patch cords with molded ferrite caps

### DESCRIPTION

**Cable:**

VGA patch cord made up of 5 coaxial shielded video cables and 6 flexible AWG28 conductors.

**Connectors:**

End A: VGA plug, male HD15 with molded plastic + ferrite cap  
End B: VGA plug, male HD15 with molded plastic + ferrite cap

### APPLICATION

- Audio/Video VGA

## ORDERING INFORMATION

| REF         | DESCRIPTION                              | LENGTH | PACKAGING |
|-------------|--|--------|-----------|
| IDCORDVGA01 | Patch cord VGA molded Male/Male 1-meter  | 1 m    | Unit      |
| IDCORDVGA02 | Patch cord VGA molded Male/Male 2-meter  | 2 m    | Unit      |
| IDCORDVGA03 | Patch cord VGA molded Male/Male 3-meter  | 3 m    | Unit      |
| IDCORDVGA05 | Patch cord VGA molded Male/Male 5-meter  | 5 m    | Unit      |
| IDCORDVGA10 | Patch cord VGA molded Male/Male 10-meter | 10 m   | Unit      |
| IDCORDVGA15 | Patch cord VGA molded Male/Male 15-meter | 15 m   | Unit      |



“Indispensable tools to make sure that the connection is compliant and that the delivered installation will fully satisfy users.”

## ADVANTAGES

- Detects continuity problems
- IDTESTRJ: Quick and economical continuity tester
- IDTESTRES: Precisely indicates the transmission quality

## DESCRIPTION

Standalone continuity and network tester, battery operated.

Used to check the conformity of the wiring diagram, both for RJ45 and RJ11/12 connections.

IDTESTRES can be used to check the performance of the transmission.

## APPLICATION

- VDI tertiary and residential (no need for complete acceptance testing)

## STANDARDS

- **SYSTEM:** ISO/IEC 11801 Ed3.0

## ORDERING INFORMATION

| REF       | DESCRIPTION                        | PACKAGING |
|-----------|------------------------------------|-----------|
| IDTESTRJ  | Continuity tester RJ45 and RJ11/12 | Unit      |
| IDTESTRES | Network tester RJ45                | Unit      |

# IDTOOLKIT1

“Premium” tool and test kit



- 1 × crimping tool for RJ45/RJ12/RJ11 plug
- 1 × insertion tool 110
- 1 × professional stripping tool for LAN and COAX
- 1 × tester USB/LAN/9 Multi-modular
- 2 × connection lines
- 10 RJ45 and 10 RJ12 plugs



“A comprehensive and affordable kit to make all types of connections. The continuity tester is essential!”

## ADVANTAGES

- All in one
- Insertion tool 110 for connections on telephone panels
- RJ45 and RJ11 plugs for on-site repairs
- Continuity tester

## DESCRIPTION

Tool kit for setting up VDI networks.

## APPLICATION

- VDI tertiary and residential (no need for complete acceptance testing)

## STANDARDS

- **SYSTEM:** ISO/IEC 11801 Ed3.0

## ORDERING INFORMATION

| REF        | DESCRIPTION                          | PACKAGING |
|------------|--------------------------------------|-----------|
| IDTOOLKIT1 | Tool and network test pack - Premium | Unit      |

# IDTOOLKIT2

“Professional” tool and test kit



- 1 × crimping tool for RJ45/RJ12/RJ11 plug
- 1 × insertion tool 110
- 1 × basic stripping tool
- 1 × LAN Multi-network tester
- 2 × connection lines
- 10 RJ45 and 10 RJ12 plugs



“This professional kit contains all the tools for network technicians. Crimping, plus tools for preparation, insertion and even testing--everything you need!” “

## ADVANTAGES

- All in one
- Insertion tool 110 for connections on telephone panels
- RJ45 and RJ11 plugs for on-site repairs
- Network connection tester

## DESCRIPTION

Tool kit for setting up VDI networks.

## APPLICATION

- VDI tertiary and residential (no need for complete acceptance testing)

## STANDARDS

- **SYSTEM:** ISO/IEC 11801 Ed3.0

## ORDERING INFORMATION

| REF        | DESCRIPTION                               | PACKAGING |
|------------|---|-----------|
| IDTOOLKIT2 | Tool and network test pack - Professional | Unit      |

# IDDEGAIN

## Stripping tool



### ADVANTAGES

- Professional quality
- To prepare all data and coaxial cables
- Stripping diameter adjustable for different types of shielding

### DESCRIPTION

Preparation and stripping tool for data and coaxial cables  
Remove the sheathe and foils with one turning motion

### APPLICATION

- VDI tertiary and residential

### STANDARDS

- **SYSTEM:** ISO/IEC 11801 Ed3.0



“Should always be kept on hand to save time and make sure no cables are damaged during preparation.”

### ORDERING INFORMATION

| REF      | DESCRIPTION                | PACKAGING |
|----------|----------------------------|-----------|
| IDDEGAIN | RJ and Coax stripping tool | Unit      |

TOOLS & TEST

CAT 6A



# IDSWITCH5P10100

10/100 switch

## ADVANTAGES

- Quick and easy installation



## DESCRIPTION

Provides flexibility with 5 10/100BASE-TX 10/100Mbit/s ports, Full-Duplex/Half-Duplex, auto-negotiation, MDI/MDIX automatic.

Takes into account self-learning and auto-aging of MAC 1K addresses.

Easy, turnkey installation

## STANDARDS

- IEEE802.3 (10BASE-T)
- IEEE802.3u (100BASE-T)
- IEEE802.3az Energy Efficient Ethernet



“Each port can be used for the overall network or as a connection port.”

## ORDERING INFORMATION

| REF             | DESCRIPTION                  | PACKAGING |
|-----------------|------------------------------|-----------|
| IDSWITCH5P10100 | 5 ports fast Ethernet switch | Unit      |

# IDSWITCH8P10100

10/100 switch

## ADVANTAGES

- Quick and easy installation



## DESCRIPTION

Provides flexibility with 8 10/100BASE-TX 10/100Mbit/s ports, Full-Duplex/Half-Duplex, auto-negotiation, MDI/MDIX automatic

Takes into account self-learning and auto-aging of MAC 1K addresses

Easy, turnkey installation

## STANDARDS

- IEEE802.3 (10BASE-T)
- IEEE802.3u (100BASE-T)
- IEEE802.3az Energy Efficient Ethernet



“Each port can be used for the overall network or as a connection port.”

## ORDERING INFORMATION

| REF             | DESCRIPTION                  | PACKAGING |
|-----------------|------------------------------|-----------|
| IDSWITCH8P10100 | 8 ports fast Ethernet switch | Unit      |

# IDSWITCH16P10100

10/100 switch

## ADVANTAGES

- Quick installation and ready for immediate use on a local network



## DESCRIPTION

Provides flexibility with 16 10/100BASE-TX 10/100Mbit/s ports, Full-Duplex/Half-Duplex, auto-negotiation, MDI/MDIX automatic  
 Takes into account self-learning and auto-aging of MAC 8K addresses  
 Easy, turnkey installation  
 Can be rack-mounted

## STANDARDS

- IEEE802.3 (10BASE-T)
- IEEE802.3u (100BASE-T)
- IEEE802.3az Energy Efficient Ethernet



"With accessories kit for mounting on 19-inch server rack."

## ORDERING INFORMATION

| REF              | DESCRIPTION                   | PACKAGING |
|------------------|-------------------------------|-----------|
| IDSWITCH16P10100 | 16 ports fast Ethernet switch | Unit      |

SWITCHING EQUIPMENT

# IDSWITCH5P101001000

10/100/1000 switch

## ADVANTAGES

- Quick and easy installation



## DESCRIPTION

1000 Mbit/s in mode Full-Duplex, 10/100/1000 Mbit/s in mode Full-Duplex/Half-Duplex, auto-negotiation, MDI/MDIX automatic

Takes into account self-learning and auto-aging of MAC 4K addresses

Reduced carbon footprint thanks to cutting-edge eco-energy technology (IEEE 802.3az)

## STANDARDS

- IEEE802.3 (10BASE-T)
- IEEE802.3u (100BASE-T)
- IEEE802.3ab (1000BASE-T)
- IEEE802.3az Energy Efficient Ethernet



"Eliminates the need for crossed cables or Uplink ports"

## ORDERING INFORMATION

| REF                 | DESCRIPTION           | PACKAGING |
|---------------------|-----------------------|-----------|
| IDSWITCH5P101001000 | 5 port gigabit switch | Unit      |

# IDSWITCH8P101001000

10/100/1000 switch

## ADVANTAGES

- Quick and easy installation



## DESCRIPTION

8 port Ethernet gigabit  
 Frame extended to 9K for optimal data transfer speed  
 Takes into account self-learning and auto-aging of MAC 4K addresses  
 Reduced carbon footprint thanks to cutting-edge eco-energy technology (IEEE 802.3az)

## STANDARDS

- IEEE802.3 (10BASE-T)
- IEEE802.3u (100BASE-T)
- IEEE802.3ab (1000BASE-T)
- IEEE802.3az Energy Efficient Ethernet



“The auto-negotiation on each port detects the speed of the connection for a network peripheral and adjusts it to ensure compatibility and optimum performance.”

## ORDERING INFORMATION

| REF                 | DESCRIPTION           | PACKAGING |
|---------------------|-----------------------|-----------|
| IDSWITCH8P101001000 | 8 port gigabit switch | Unit      |

# IDSWITCH16P101001000

10/100/1000 switch

## ADVANTAGES

- Quick installation
- Can be rack-mounted

## DESCRIPTION

10K jumbo frames to increase the data transfer rates  
 Takes into account self-learning and auto-aging of 8K MAC addresses  
 The IEEE 802.3X flow control protects against lost packets to ensure reliable transmission  
 Internal power supply  
 19-Inch rack mounting kit included



“Increase the speed of your local network up to 32Gbps”

## STANDARDS

- IEEE802.3 (10BASE-T)
- IEEE802.3u (100BASE-T)
- IEEE802.3ab (1000BASE-T)
- IEEE802.3az Energy Efficient Ethernet

## ORDERING INFORMATION

| REF                  | DESCRIPTION            | PACKAGING |
|----------------------|------------------------|-----------|
| IDSWITCH16P101001000 | 16 port gigabit switch | Unit      |

# IDSWITCH24P101001000

10/100/1000 switch

## ADVANTAGES

- Quick installation
- Can be rack-mounted



## DESCRIPTION

10K jumbo frames to increase the data transfer rates  
 Takes into account self-learning and auto-aging of 8K MAC addresses  
 The IEEE 802.3X flow control protects against lost packets to ensure reliable transmission  
 Internal power supply  
 19-Inch rack mounting kit included

## STANDARDS

- IEEE802.3 (10BASE-T)
- IEEE802.3u (100BASE-T)
- IEEE802.3ab (1000BASE-T)
- IEEE802.3az Energy Efficient Ethernet



“Qos controls to prioritize traffic and manage bandwidth”

## ORDERING INFORMATION

| REF                  | DESCRIPTION            | PACKAGING |
|----------------------|------------------------|-----------|
| IDSWITCH24P101001000 | 24 port gigabit switch | Unit      |

# IDSWITCH8P1000 POE

10/100/1000 POE switch

## ADVANTAGES

- Quick installation



## DESCRIPTION

PoE gigabit 8 port switch, PoE 802.3at/af, Each PoE port provides a maximum supply of 30 W via Ethernet (PoE) Memory: 1 Mbit  
Memory: 1 Mbit - Buffer memory: 8K.  
Port: 8 ports PoE RJ-45 10/100/1000Base-TX.  
8 ports PoE RJ-45 10/100/1000Base-TX.  
Indicator: Power, activation, 10/100/1000

## STANDARDS

- IEEE 802.3 10-BASE-T, Ethernet
- IEEE 802.3u 100-BASE-TX, Fast Ethernet
- IEEE 802.3ab 1000BASE-T, gigabit Ethernet
- IEEE 802.3x flow control Full-Duplex
- IEEE 802.3af power supply via Ethernet (PoE)
- IEEE 802.3at power supply via Ethernet Plus (PoE+)



“Automatic detection and protection of non-standardized devices”

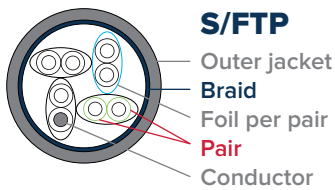
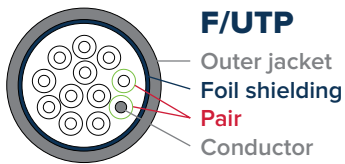
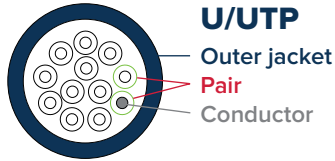
## ORDERING INFORMATION

| REF               | DESCRIPTION               | PACKAGING |
|-------------------|---------------------------|-----------|
| IDSWITCH8P1000POE | 8 port gigabit PoE switch | Unit      |

CAT 6A



## CABLE CONSTRUCTION GUIDE



STRUCTURE:

**XX / Y ZZ**

**OVERALL SHIELDING**

U = unshielded  
F = aluminum foil  
S = shielded  
SF = shielded and foiled

**PAIR**

TP = twisted pairs

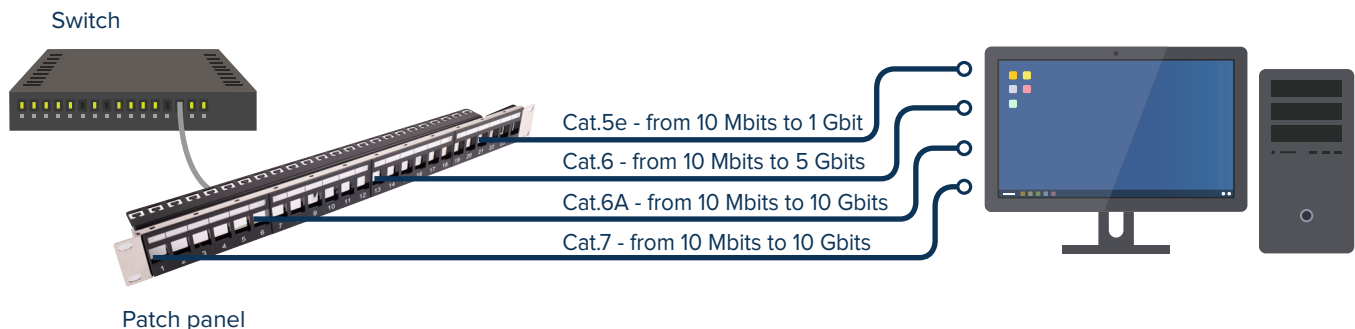
**SHIELDING OF PAIRS**

U = unshielded  
F = aluminum foil

| Examples      |   |
|---------------|---|
| <b>U/UTP</b>  | Unshielded/Unshielded Twisted Pair: <b>No shielding</b>   |
| <b>F/UTP</b>  | Foiled/Unshielded Twisted Pair: <b>Overall shielding with aluminum foil</b>   |
| <b>U/FTP</b>  | Unshielded/Foiled Twisted Pair: <b>No overall shielding, shielding of each pair with aluminum foil</b>              |
| <b>S/FTP</b>  | Braid screened/Shielded Twisted: <b>Overall shielding with braid, and shielding of each pair with aluminum foil</b> |
| <b>SF/UTP</b> | Shielded Foiled/Unshielded Twisted Pair: <b>Overall shielding with braid and foil, and unshielded twisted pairs</b> |

## TABLE OF CATEGORIES AND CONNECTOR TYPES (ISO 11801)

| BANDWIDTH (MHZ) | CATEGORY | CLASS | APPLICATION                               | APPROVED | CONNECTOR TYPE |
|-----------------|----------|-------|---|----------|----------------|
| 16              | 3        | C     | 10 Mbits Ethernet                         | 1991     | RJ45           |
| 100             | 5e       | D     | 100 Mbits, 1 Gbit, 2.5 Gbits Ethernet     | 1995     | RJ45           |
| 250             | 6        | E     | 1 Gbit, 2.5 Gbits, 5 Gbits Ethernet       | 2002     | RJ45           |
| 500             | 6A       | EA    | 10 Gbits Ethernet                         | 2007     | RJ45           |
| 600             | 7        | F     | 10 Gbits Ethernet                         | 2002     | GG45 & TERRA   |
| 1000            | 7A       | FA    | 10 Gbits Ethernet & multimedia            | 2009     | GG45 & TERRA   |
| 2000            | 8.1      | I     | 25 Gbits & 40 Gbits Ethernet              | 2016     | RJ45           |
| 2000            | 8.2      | II    | 25 Gbits & 40 Gbits Ethernet & multimedia | 2016     | GG45 & TERRA   |



## ATTENUATION FOR EACH TYPE OF FIBER (ISO 11801)

| FIBER TYPE                        | OM3  | OM4   | OM5  | OS2        |
|-----------------------------------|--|---|--|------------|
| LIGHT SOURCE                      | VCSEL  | VCSEL   | SWDM (MUX/DEMUX)                             | LASER      |
|                                   | 50/125                                       | 50/125  | 50/125                                       | 9/125      |
| STRUCTURE                         |  |   |  |            |
| BANDWIDTH OF 850 nm               | 1500 MHz/km<br>2000 MHz/km<br>(VCSEL source) | 3500 MHz/km<br>4700 MHz/km<br>(VLSSEL source) | 3500 MHz/km<br>4700 MHz/km<br>(VCSEL source) | -          |
| BANDWIDTH OF 953 nm               | -  | -   | 1850-2470 MHz/km                             | -          |
| BANDWIDTH OF 1300 nm              | 500 MHz/km                                   | 500 MHz/km                                    | 500 MHz/km                                   | -          |
| ATTENUATION AT 850 nm (STANDARD)  | 2.5 dB/km                                    | 2.5 dB/km                                     | 2.5 dB/km                                    | -          |
| ATTENUATION AT 953 nm (STANDARD)  | -  | -   | 1.8 dB/km                                    | -          |
| ATTENUATION AT 1300 nm (STANDARD) | 0.8 dB/km                                    | 0.8 dB/km                                     | 0.8 dB/km                                    | -          |
| ATTENUATION AT 1310 nm (STANDARD) | -  | -   | -  | 0.35 dB/km |
| ATTENUATION AT 1550 nm (STANDARD) | -  | -   | -  | 0.22 dB/km |

## STRENGTH OF MATERIALS

|              | POLYVINYL CHLORIDE (PVC) | LSZH POLYOLEFIN (LSZH)   | POLYETHYLENE (PE) | POLYURETHANE (PUR)    | NITRILE RUBBER (NBR)  | POLYAMIDE (PA) |
|--------------|--------------------------|--------------------------|-------------------|-----------------------|-----------------------|----------------|
| ROBUSTNESS   |                          |                          |                   |                       |                       |                |
| RODENTS      |                          |                          |                   |                       |                       |                |
| CRUSHING     |                          |                          |                   |                       |                       |                |
| INSTALLATION | In conduits              | In building<br>On campus | Buried            | In severe environment | In severe environment | In conduits    |
| TWISTING     |                          |                          |                   |                       |                       |                |
| BEND         |                          |                          |                   |                       |                       |                |
| PULLING      |                          |                          |                   |                       |                       |                |
| TEARING      |                          |                          |                   |                       |                       |                |

Ideal

Suitable

Not suitable

# GENESIA

POWERED BY ID CABLES

This catalog is distributed by



**ID CABLES**

3 Avenue Jeanne Garnerin  
91320 Wissous - FRANCE  
Bâtiment Le Cormoran  
Tel. +33 (0)1 69 79 14 04  
Fax +33 (0)1 69 79 14 35

[www.id-cables.fr](http://www.id-cables.fr)

