

IDCOFXXU600

Racks 19 inches deep 600mm

GENESIA
POWERED BY ID CABLES

+ BENEFITS

- Elegant design, direct wall mount system.
- 19-inch amount with automatic mass restoration
- Reinforced structure capable of supporting a static load of up to 90kg
- Front door with 180° opening



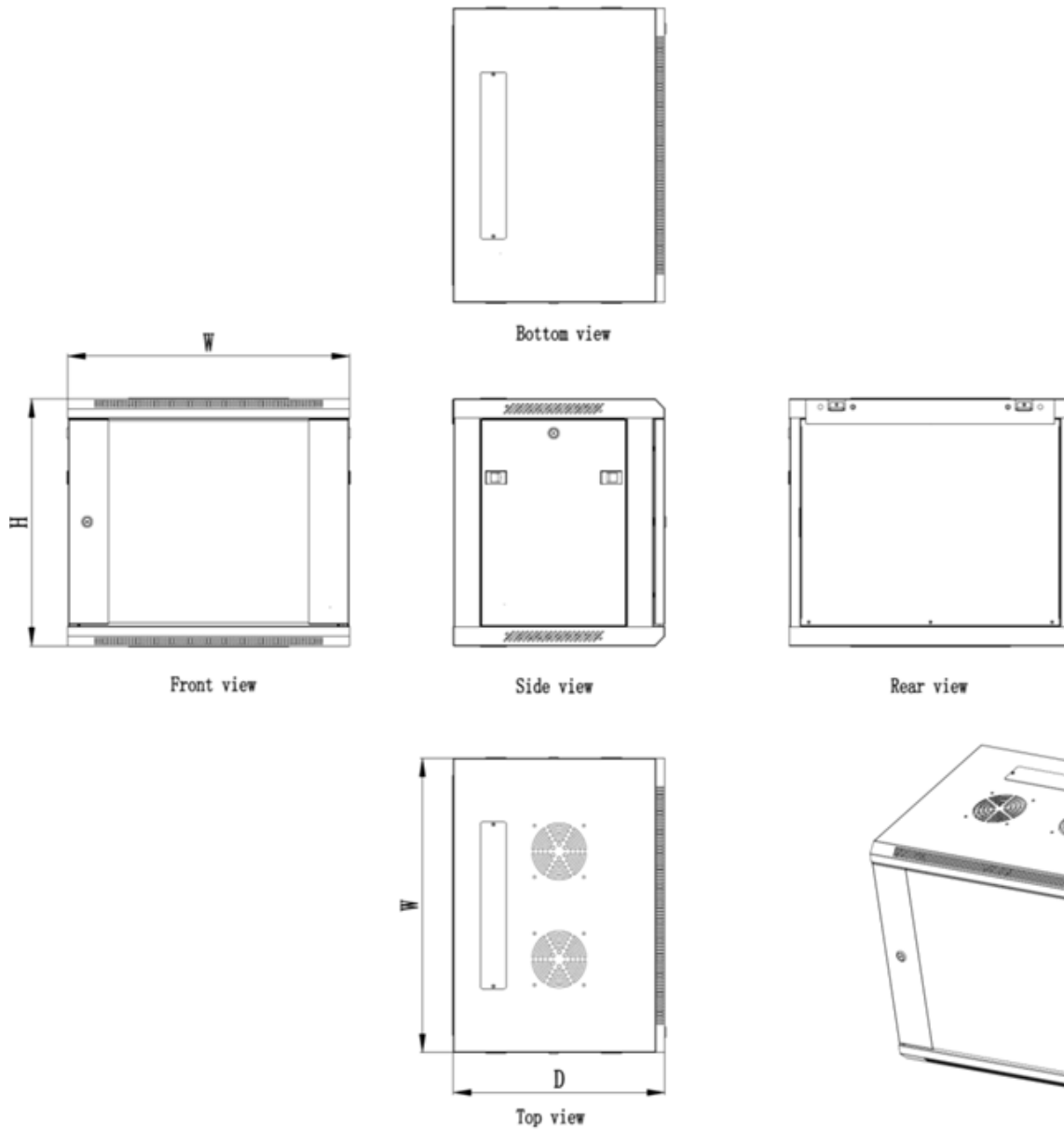
DESCRIPTION / APPLICATIONS

The 19-inch IDCOFFxx600 cabinet features an elegant design and a reinforced structure allowing for a static load of up to 90 kg. It can be installed in any office or residential environment, while providing a perfect starting point for cable distribution. The box, delivered assembled, can be easily fixed to the wall by one person, saving time during installation. It has a system for direct wall mounting.

Color: black RAL9005
Protection index: IP20

Ed1 01/2021OP

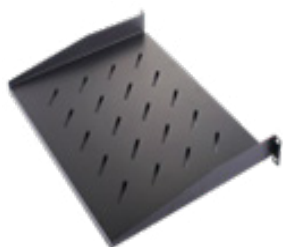
SCHEMAS AND DIMENSIONS



REF	H (mm)	W (mm)	D (mm)	NET WEIGHT
IDCOF6U600	370.5	600	600	16 kg
IDCOF9U600	503.8	600	600	18 kg
IDCOF12U600	637.2	600	600	22 kg
IDCOF15U600	770.5	600	600	26 kg
IDCOF18U600	903.9	600	600	28 kg
IDCOF22U600	1081	600	600	38 kg

RELATED PRODUCTS

ACCESSOIRES :	
REF	DESIGNATION
IDPLFIX1U250	ETAGERE FIXE 1U P.250
IDPASSF1U	PASSE-FIL BALAIS 1U
IDGUIDC1U	PASSE-FIL 1U 4 CROCHETS
IDOB1U	OBTURATEUR 19" 1U
IDALIM8I	BLOC ALU 19" 8 PC + INTER
IDALIM8	BLOC ALU 19" 8 PC
IDROULET	1KIT ROULETTES POUR COFFRET 19"
IDVENTIL1	BLOC VENTILATEUR COFFRET 19"



ORDER INFORMATION

REF	NAME	DESIGNATION	LOAD CAPACITY
IDCOF6U600	6U	BOX 19" 6U P.600	40 kg
IDCOF9U600	9U	BOX 19" 9U P.600	40 kg
IDCOF12U600	12U	BOX 19" 12U P.600	50 kg
IDCOF15U600	15U	BOX 19" 15U P.600	50 kg
IDCOF18U600	18U	BOX 19" 18U P.600	60 kg
IDCOF22U600	22U	BOX 19" 22U P.600	90 kg