

IDCOFXXU450

19 inches deep 450mm depth racks

GENESIA
POWERED BY ID CABLES

+ BENEFITS

- Elegant design, direct wall mounting system.
- 19-inch amount with automatic ground clearance
- Reinforced structure capable of supporting a static load of up to 90kg
- Front door with 180° opening



DESCRIPTION / APPLICATIONS

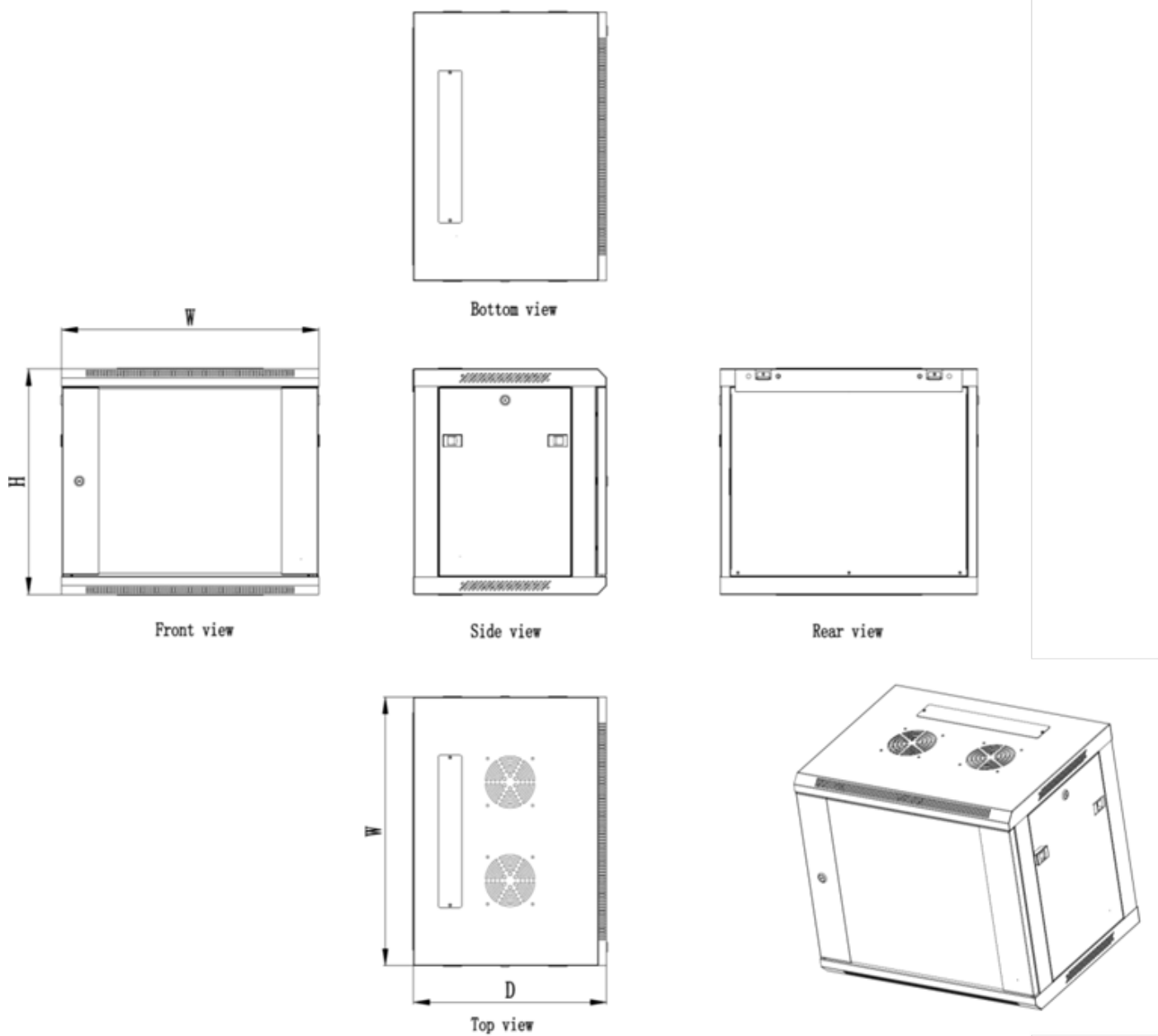
The 19-inch IDCOFFxx450 cabinet features an elegant design and a reinforced structure that can support a static load of up to 90 kg.

It can be installed in any office or residential environment, while providing a perfect starting point for cable distribution. The box, delivered fully assembled, easily attaches to the wall by a single person, which saves time during installation. It has a direct hanging system on the wall.

Color: black RAL9005

Protection rating: IP20

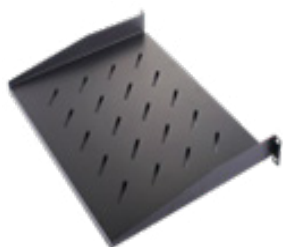
DIAGRAMS AND DIMENSIONS



REF	H (mm)	W (mm)	D (mm)	NET WEIGHT
IDCOF6U450	370.5	600	450	13 kg
IDCOF9U450	503.8	600	450	16 kg
IDCOF12U450	637.2	600	450	19 kg
IDCOF15U450	770.5	600	450	22 kg
IDCOF18U450	903.9	600	450	26 kg
IDCOF22U450	1081	600	450	28 kg

RELATED PRODUCTS

ACCESSOIRES :	
REF	DESIGNATION
IDPLFIX1U250	FIXED SHELF 1U P.250
IDPASSF1U	BRUSH GROMMET PANEL 1U
IDGUIDC1U	CABLE MANAGEMENT PANEL 1U 4 HOOKS
IDOB1U	SHUTTER 19" 1U
IDALIM8I	ALUMINUM BLOCK 19" 8 PC + INTER
IDALIM8	ALUMINUM BLOCK 19" 8 PC
IDROULET	1 KIT WHEELS FOR BOX 19"
IDVENTIL1	FAN UNIT ENCLOSURE 19"



ORDER INFORMATION

REF	NAME	DESIGNATION	LOAD CAPACITY
IDCOF6U450	6U	BOX 19" 6U P.450	40 kg
IDCOF9U450	9U	BOX 19" 9U P.450	40 kg
IDCOF12U450	12U	BOX 19" 12U P.450	50 kg
IDCOF15U450	15U	BOX 19" 15U P.450	50 kg
IDCOF18U450	18U	BOX 19" 18U P.450	60 kg
IDCOF22U450	22U	BOX 19" 22U P.450	90 kg