

+ BENEFITS

- Elegant design and reinforced structure capable of supporting a static load of up to 600 kg.
- 19 inch front/rear amounts numbered and with automatic grounding connection
- Top and bottom cable entry (adjustable) protected by a rubber to prevent damage to the cables
- Front/Rear Saloon Doors - Removable and Lockable Side Panels



DESCRIPTION / APPLICATIONS

The 19-inch IDBAIExx88 bays feature an elegant design and a reinforced structure allowing for Static load capacity up to 600 kg.

The bays are equipped with a 4mm tempered glass front door with a three-point key lock,

The rotation is carried out by removable hinges that facilitate the dismantling of the door.

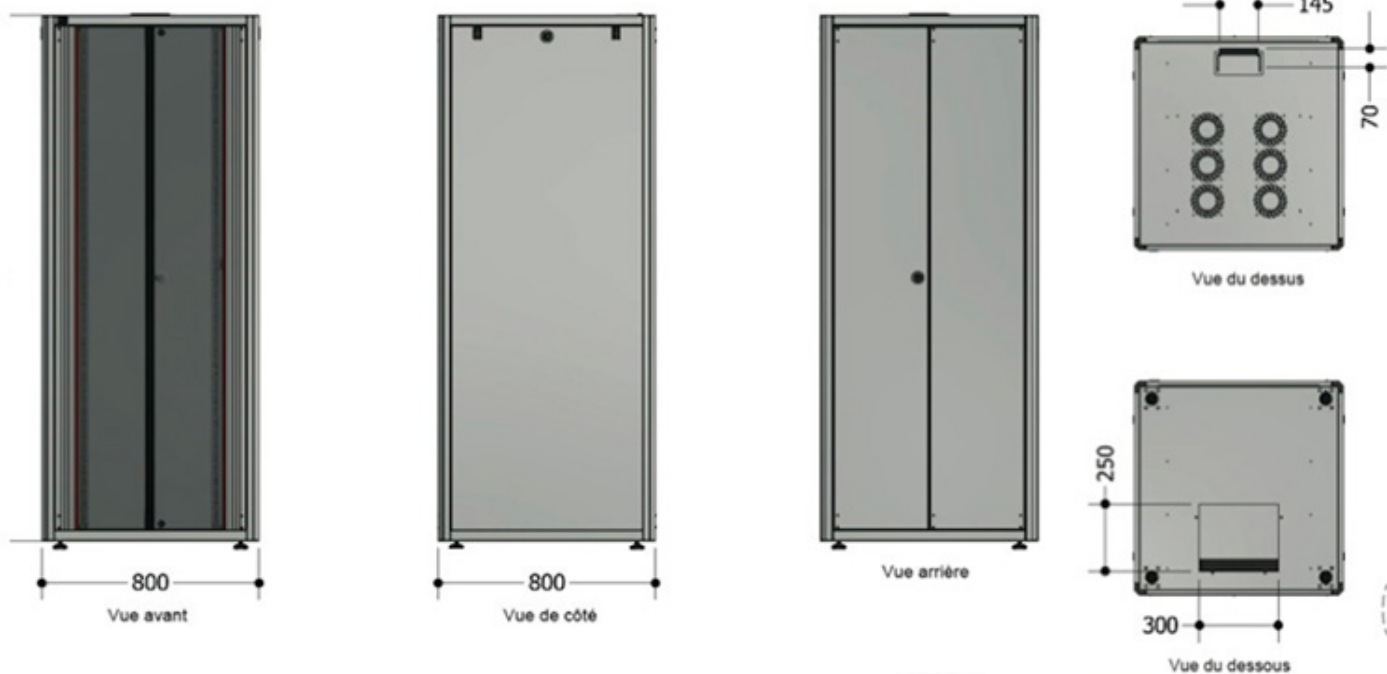
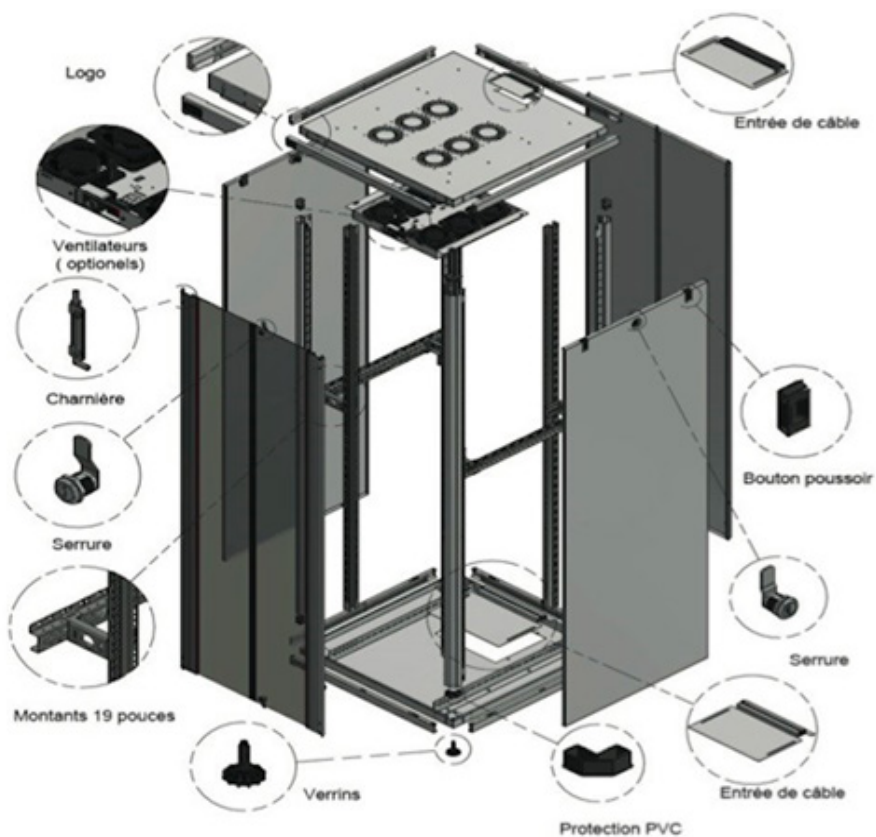
The side panels are also easily removable and lockable with a key.

The cables enter from the top or the bottom through dedicated openings of 300mmx200mm.

Color: black RAL9005

Protection rating: IP20

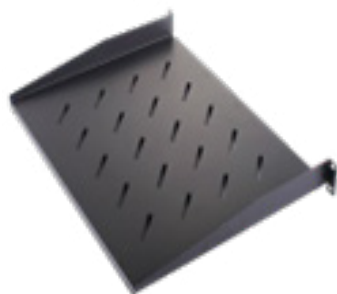
DIAGRAMS AND DIMENSIONS



REF	H (MM)	W (MM)	D (MM)	NET WEIGHT
IDBAIE4288	2004	800	800	109 kg
IDBAIE4788	2227	800	800	114 kg

RELATED PRODUCTS

ACCESSOIRES	
REF	DESIGNATION
IDPLFIX1U250	FIXED SHELF 1U P250
IDPASSF1U	BRUSH GROMMET PANEL 1U
IDGUIDC1U	CABLE MANAGEMENT PANEL 1U 4 HOOKS
IDOB1U	SHUTTER 19" 1U
IDALIM8I	ALUMINUM BLOCK 19" & PC + INTER
IDALIM8	ALUMINUM BLOCK 19" 8 PC



ORDER INFORMATION

REF	NAME	DESIGNATION	LOAD CAPACITY
IDBAIE4288	42U	BAIE 42U 800x800 with front glass door	600 kgs
IDBAIE4788	47U	BAIE 47U 800x800 with front glass door	600 kgs