

## + BENEFITS

- Elegant design and reinforced structure capable of supporting a static load of up to 600kg.
- Front/back 19-inch numbered amounts with automatic mass adjustment
- Top and bottom cable entry (adjustable) protected by rubber to prevent damage to cables.
- Removable and lockable side panels



## DESCRIPTION / APPLICATIONS

The 19-inch IDBAIExx68 enclosures feature an elegant design and a reinforced structure that allows Static load capacity up to 600 kg.

The bays are equipped with a front door made of 4mm tempered glass with a three-point key lock. rotation is carried out by removable hinges that facilitate the dismantling of the door.

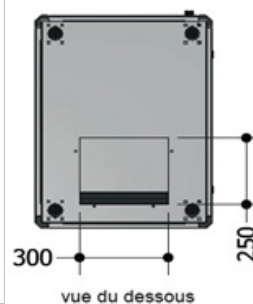
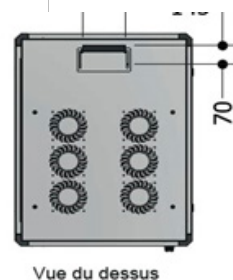
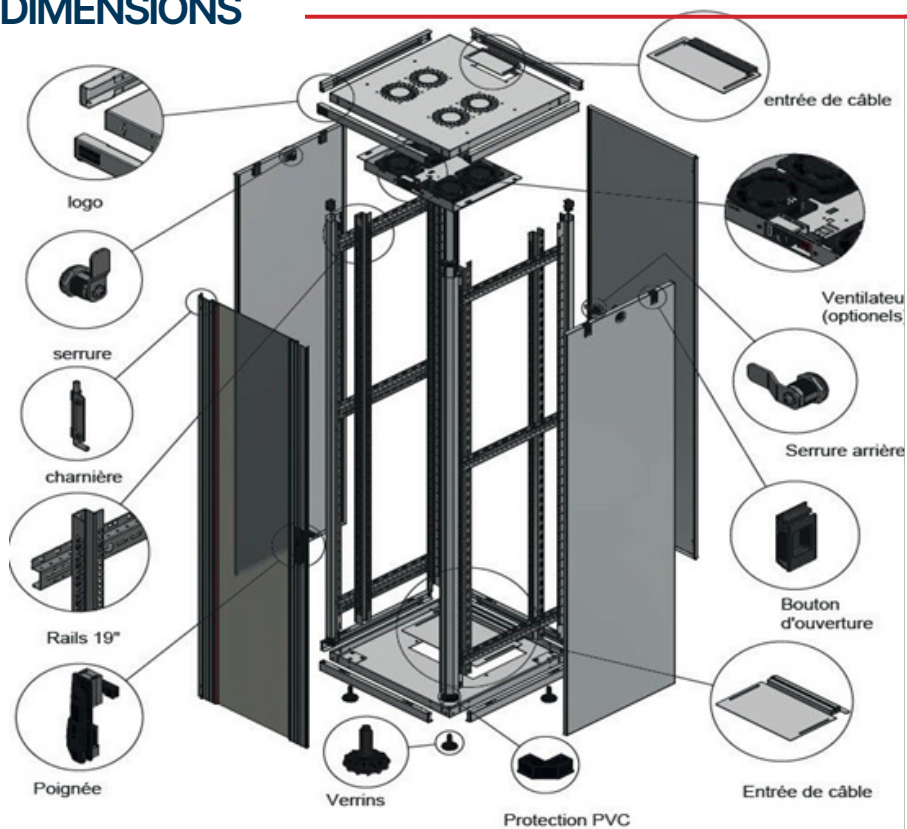
The side panels are also easily removable and lockable with a key.

Cable entry is done from the top or bottom through dedicated openings measuring 300mmx200mm.

Color: black RAL9005

Protection index: IP20

# SCHEMES AND DIMENSIONS

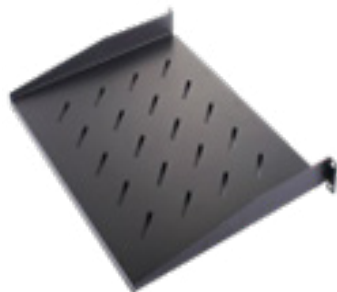


REF	H (MM)	W (MM)	D (MM)	GROSS WEIGHT
IDBAIE4268	2004	600	800	107 kg

## RELATED PRODUCTS

---

ACCESSOIRES	
REF	DESIGNATION
IDPLFIX1U250	FIXED RACKSHELF 1U P.250
IDPASSF1U	BRUSH GROMMET 1U
IDGUIDC1U	CABLE MANAGEMENT PANEL 1U 4 HOOKS
IDOB1U	SHUTTER 19" 1U
IDALIM8I	ALUMINUM BLOCK 19" 8 PC + INTER
IDALIM8	ALUMINUM BLOCK 19" 8 PC



## ORDER INFORMATION

---

REF	NAME	DESIGNATION	LOAD CAPACITY
IDBAIE4268	42U	BAIE 42U 600×800 porte avant vitrée	600 kg