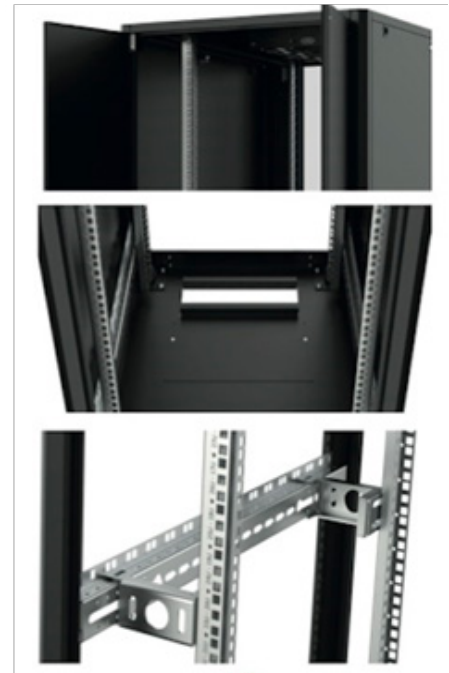


+ BENEFITS

- Elegant design and reinforced structure capable of supporting a static load of up to 600 kg
- Front / rear 19-inch numbered amount and with automatic ground connection
- Top and bottom cable entry (adjustable) protected by rubber to prevent damage to cables
- Front/rear doors Saloon - Removable and lockable side panels



DESCRIPTION / APPLICATIONS

The 19-inch bay IDBAIE42810 features an elegant design and reinforced structure enabling a exciting user experience. static load capacity up to 600 kg.

The bay is equipped with a front door made of 4mm tempered glass with a three-point key lock, the rotation is performed by removable hinges which make it easier to dismantle the door.

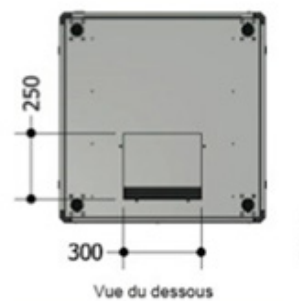
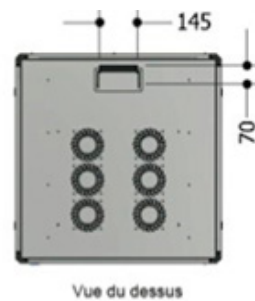
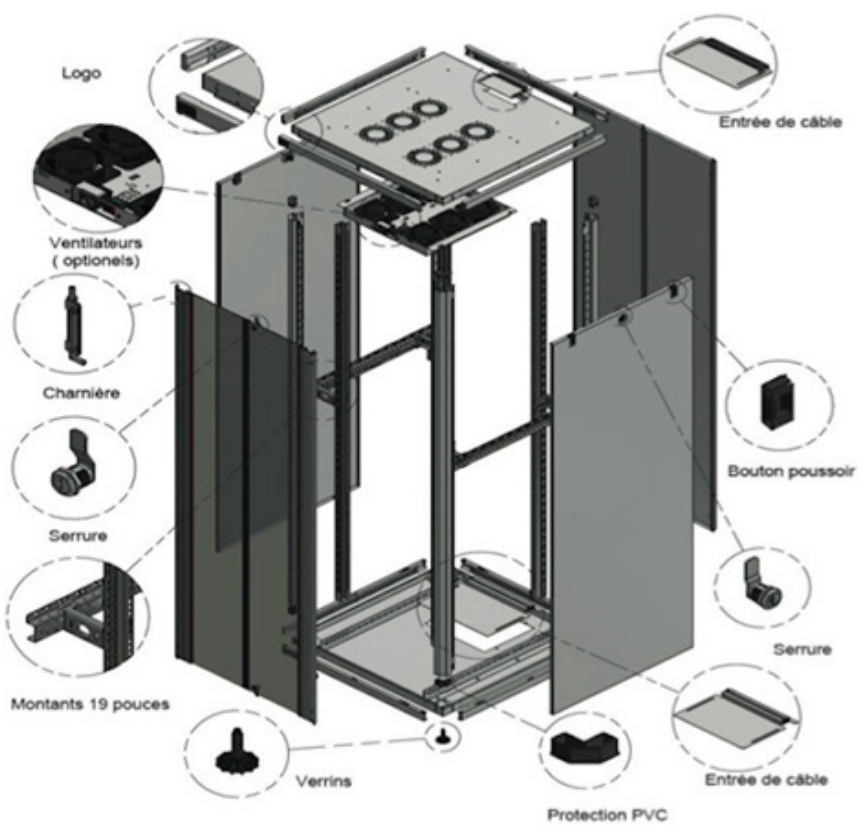
The side panel is also easily removable and lockable with a key.

Cable entry is done from the top or bottom through dedicated openings measuring 300mmx200mm.

Color: black RAL9005

Protection index: IP20

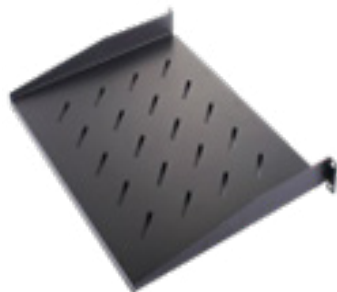
SCHEMES AND DIMENSIONS



REF	H (MM)	W (MM)	D (MM)	NET WEIGHT
IDBAIE42810	2005	800	1000	124 kg

RELATED PRODUCTS

ACCESSOIRES	
REF	DESIGNATION
IDPLFIX1U250	FIXED SHELF 1U P250
IDPASSF1U	BRUSH GROMMET 1U
IDGUIDC1U	WIRE MANAGER 1U 4 HOOKS
IDOB1U	SHUTTER 19" 1U
IDALIM8I	ALU BLOCK 19th & PC + INTER
IDALIM8	ALUMINUM RACK 19" 8 PC



ORDER INFORMATION

REF	NAME	DESIGNATION	LOAD CAPACITY
IDBAIE42810	42U	BAIE 42U 800x1000 glass front door	600 kgs